

Archaeological Impact Assessment

PROPOSED DEVELOPMENT, AMANZI MOYA ESTATE: REMAINDER VLEESCHBAAI 251, MISGUNST-AAN-DE-GOURITZ 257/2 & KEEROM 264, VLEESBAAI, MOSSEL BAY MUNICIPALITY, EDEN DISTRICT, WESTERN CAPE

prepared for

**Cape Environmental Assessment Practitioners
Louise-Mari van Zyl (Director)**

PO Box 2070, George, 6530

Tel: (044) 874 0365. Fax: (044) 874 0432. Cell: 071 603 4132

louise@cape-eaprac.co.za - www.cape-eaprac.co.za

by



Centre for Heritage and Archaeological Resource Management cc

Peter Nilssen, CHARM, PO Box 176, Great Brak River, 6525

044 620 4936 | 0827835896 | peter@carm.co.za | www.cam.co.za

Executive Summary

An Archaeological Impact Assessment (AIA) was conducted for the above-named development on 2, 3 and 15 March 2010. The bulk of the study was conducted in previously disturbed (cultivation and farming activities) areas. While undisturbed areas are variably vegetated and in places impenetrable, adequate expanses of ground surfaces were visible for archaeological inspection and assessment.

While 779 archaeological occurrences were mapped, these do not only represent single, isolated artefacts. Thousands of artefacts of Stone Age origin were seen during the survey. Historic materials are clustered mostly around the existing homestead – older than 60 years - and a small, fenced cemetery is also located in the study area. The study area is particularly rich in its Stone Age archaeological record and it is strongly suggested that if development were to proceed, it should be restricted to the disturbed area in the SE half of the property. Further recommended mitigation measures are given below.

Due to their nature and very high frequencies, archaeological occurrences are not dealt with in isolation in terms of their significance and requirements for mitigation. Rather, the study area and its archaeological record are viewed as an integrated and interconnected micro environment that has been occupied by human ancestors and modern people for at least several 100 000 years, and potentially, for over a million years. The archaeological assessment as well as recommendations in mitigation is made from this perspective (see section 3 below). Archaeologically, a large part of the study area, most of the northern half, is considered very sensitive and as a whole, considered to be of high significance. The vast bulk of the cultural landscape of the study area is represented by the prehistoric archaeological record.

Provided that the below recommended mitigation measures pertaining to archaeological resources – as approved by Heritage Western Cape - are implemented, it is recommended that the proposed development be approved.

It is recommended that;

- Due to the rich nature of the archaeological record in the study, even in previously disturbed areas, HWC may require an application for a destruction permit from the developer. HWC should be consulted in this regard.*
- The old farm house and graves should be protected and conserved via incorporation into the development.*
- Alternative 4 of the development layout and footprint should be adopted. While the plans indicating the realignment of the development boundary in the N and NW – as recommended here and by other specialists - are not available at this time, the revised boundary alignment runs along the juncture between the disturbed area and natural vegetation in the N and NW (see Figure 4). This ensures that the archaeological record is not impacted by the development. The recommended boundary for the development footprint is shown in red in Figure 4. The revised layout plans will be supplied by Ms van Zyl of Cape*

EAPrac in the next week or so, at which time they will be submitted to HWC. From an archaeological perspective, the area to the north and west of the red boundary line should be a conservation or nature area.

- *It is certain that sub surface archaeological remains will occur in formerly disturbed and/cultivated areas and it is also likely that an old rubbish dump – associated with the farm house or possible earlier dwellings – occurs in the study area and therefore, earthmoving activities should be monitored by - or under the supervision of - a professional archaeologist. Archaeological monitoring will ensure that negative impact on subterranean archaeological and paleontological materials is avoided or minimized (see Pether 2010). Paleontological materials do occur in geological deposits present in the study area and monitoring will allow early detection of such materials if exposed during earthmoving.*

Note that;

- *The old farm house and graves are protected by the National Heritage Resources Act (No. 25 of 1999) and any alteration or changes to these heritage resources requires a permit from HWC (structures) and or the South African Heritage Resources Agency (graves).*
- *In the event that vegetation clearing and earthmoving activities expose archaeological or paleontological materials, such activities must stop and Heritage Western Cape must be notified immediately.*
- *If archaeological materials are exposed through earthmoving activities, then they must be dealt with in accordance with the National Heritage Resources Act (No. 25 of 1999) and at the expense of the developer(s) and/or property owner(s).*
- *Unmarked human burials may occur anywhere in the landscape and are often exposed during earthmoving activities. Human remains are protected by law and, if older than 60 years, are dealt with by Heritage Western Cape (Mr. Nick Wiltshire 021 483 9685) or the State Archaeologist at the South African Heritage Resources Agency (Mrs. Mary Leslie who can be reached at 021 462 4502).*

Table of Contents

Content	Page
Executive Summary _____	2
1. Introduction _____	5
1.1. Background _____	5
1.2. Purpose of the Study _____	5
1.3. Study Area _____	6
1.4. Approach to the Study _____	7
2. Results _____	9
3. Sources of Risk, Impact Identification and Assessment _____	18
4. Required and Recommended Mitigation Measures _____	19
5. References _____	20
Figures and Plates _____	21
Appendix A _____	39

1. Introduction

1.1 Background

Concerning the proposed development of the Amanzi Moya Estate on Remainder Vleeschbaai 251, the Farm Keerom 264 and Portion 2 Farm Misgunst aan de Gouritz 257 (Figures 1 through 4), Ms Louise-Mari of Cape Environmental Assessment Practitioners (Cape EAPrac) appointed CHARM to conduct an Archaeological Impact Assessment (AIA) in accordance with Section 38 of the National Heritage Resources Act (Act 25 of 1999) and to complete and sign the relevant sections of Heritage Western Cape's (HWC) Notification of Intent to Develop (NID).

The study focused on affected portions of properties as indicated by the proposed development boundary shown in Figure 2. Earlier archaeological work conducted in the surrounding environment and immediate vicinity of the study area has relevance (Deacon 1989; Halkett & Hart 1996; Kaplan 2004, 1998a, 1998b, 1993 and Marean 2009).

The development proposal includes the following:

- a mixture of single residential and group housing opportunities totalling 290 units (including 15 social housing units on-site);
- a clubhouse and associated facilities including tennis courts, a volley ball court and swimming pool;
- a layout that takes into account and avoids the remaining natural habitats with conservation potential and accommodates the historic farmhouse and on-site graves as part of the development concept;
- private open space and private roads; and
- will utilize and upgrade bulk services and infrastructure planned to meet the demand of the proposed development.

All the proposed development activities will potentially have a permanent negative impact on archaeological and heritage related resources in the study area.

The alternative layout plans for the proposed development are shown in Figures 2 through 4, the boundary point coordinate data for the 4 layouts are given in Table 1, and further details and specifications are available from Ms Louise-Marie van Zyl of Cape EAPrac (see contact details on title page; also see van Zyl 2009).

1.2. Purpose and Scope of the Study

Objectives of the Archaeological Impact Assessment are:

- To assess the study area for traces of archaeological and heritage related resources;
- To identify options for archaeological mitigation in order to minimize potential negative impacts; and
- To make recommendations for archaeological mitigation where necessary.

Terms of Reference (ToR):

- a) Locate boundaries and extent of the study area.
- b) Literature review of earlier archaeological work in and near study area
- c) Conduct a survey of the study area to identify and record archaeological and heritage related resources.
- d) Assess the impact of the proposed development on above-named resources.

- e) Recommend mitigation measures where necessary.
- f) Prepare and submit a report to the client that meets standards required by Heritage Western Cape (HWC) in terms of the National Heritage Resources Act, No. 25 of 1999.

1.3 Study Area

The study area is situated NNW of the coastal town of Vleesbaai – some 24km SW of Mossel Bay - and E and N of the primary access road into Vleesbaai (Main Road 336) that forms its western and southern boundaries (Figures 1 & 2). The Muller Street boundary fence of Vleesbaai is part of the eastern boundary, which is completed by the proposed Kloofsig residential development. Agricultural land lies beyond the northern boundary (see van Zyl 2009). The outline of the study area is shown in Figure 2 and coordinate data for boundary points of various development alternatives are given in Table 1.

Table 1. Coordinate data for boundary points of the four alternative layout plans for the proposed Amanzi Moya Estate. (VB1A = Vleesbaai alternative 1 waypoint A)

Name	Description	Datum: WGS 84 Lat/Lon dec.degrees	Datum: WGS 84 Grid: SA National
VB1A	alternative 1 boundary point	S34.28483 E21.89758	21 Y-082646 X3795621
VB1B	alternative 1 boundary point	S34.28339 E21.90510	21 Y-083340 X3795467
VB1C	alternative 1 boundary point	S34.28723 E21.90972	21 Y-083762 X3795897
VB1D	alternative 1 boundary point	S34.29024 E21.91017	21 Y-083800 X3796232
VB1E	alternative 1 boundary point	S34.28978 E21.90287	21 Y-083129 X3796175
VB1F	alternative 1 boundary point	S34.28852 E21.90007	21 Y-082872 X3796032
VB1G	alternative 1 boundary point	S34.28685 E21.89886	21 Y-082762 X3795846
VB1H	alternative 1 boundary point	S34.28733 E21.89753	21 Y-082639 X3795898
VB1I	alternative 1 boundary point	S34.28699 E21.89735	21 Y-082623 X3795861
VB1J	alternative 1 boundary point	S34.28657 E21.89814	21 Y-082696 X3795815
VB1K	alternative 1 boundary point	S34.28622 E21.89821	21 Y-082703 X3795776
VB1L	alternative 1 boundary point	S34.28611 E21.89843	21 Y-082724 X3795764
VB2A	alternative 2 boundary point	S34.28483 E21.89758	21 Y-082646 X3795621
VB2B	alternative 2 boundary point	S34.28339 E21.90510	21 Y-083340 X3795467
VB2C	alternative 2 boundary point	S34.28723 E21.90972	21 Y-083762 X3795897
VB2D	alternative 2 boundary point	S34.29024 E21.91017	21 Y-083800 X3796232
VB2E	alternative 2 boundary point	S34.28978 E21.90287	21 Y-083129 X3796175
VB2F	alternative 2 boundary point	S34.28572 E21.90007	21 Y-082874 X3795722
VB3A	alternative 3 boundary point	S34.28928 E21.90123	21 Y-082978 X3796118
VB3B	alternative 3 boundary point	S34.28610 E21.90438	21 Y-083271 X3795767
VB3C	alternative 3 boundary point	S34.28513 E21.90717	21 Y-083529 X3795662
VB3D	alternative 3 boundary point	S34.28724 E21.90972	21 Y-083762 X3795899
VB3E	alternative 3 boundary point	S34.29008 E21.90987	21 Y-083772 X3796213
VB3F	alternative 3 boundary point	S34.28976 E21.90270	21 Y-083113 X3796171
VB4A	alternative 4 boundary point	S34.28504 E21.90296	21 Y-083141 X3795648
VB4B	alternative 4 boundary point	S34.28469 E21.90665	21 Y-083482 X3795613
VB4C	alternative 4 boundary point	S34.28734 E21.90962	21 Y-083752 X3795910
VB4D	alternative 4 boundary point	S34.29003 E21.90990	21 Y-083776 X3796208
VB4E	alternative 4 boundary point	S34.28978 E21.90296	21 Y-083137 X3796175
VB4F	alternative 4 boundary point	S34.28928 E21.90126	21 Y-082980 X3796118

The most easterly boundary of the study area is about 300m from the Indian Ocean. The topography consists of gently undulating hills with a relatively small river valley present in the northern half of the study area (Figures 1, 2 & 5 and Plates 1 through 4). About 70% of the site is disturbed by historic and recent human activities including vehicle, pedestrian and domestic animal tracks, ploughing, construction of 2 dams, quarrying and geo-test pits (Figure 3). The latter activities resulted in only small patches of indigenous Coastal Thicket surviving on the property. The latter vegetation occurs mostly in the northern half of the study area in association with the river valley (Figure 3 and Plates 1 through 4). Water erosion is evident in sheet washed areas and erosion gullies, which often occur in areas denuded of vegetation cover by recent disturbances as listed above.

The cultivated high lying areas are made up of mixed geological sediments including a small component of aeolian sands, calcrete nodules and reddish sediments - that are likely of palaeosol (ancient land surface) origin – dominate the matrix (Plates 2 through 4). While water-rounded quartzite cobbles occur in this area, they were probably carried in by hominins – manu-ports, though natural occurrences of water-worn cobbles were observed. In places, at the top of the river valley, calcrete bedding is exposed, but the nature and consistency of calcrete occurrences in the study area vary from chalky nodules to a consolidated bed (Plates 2, 3, 4, 6, 8, 9 and 11). The bottom of the river valley includes various geological components as described above - as well as rocks and cobbles - with the bulk of the matrix consisting of water laid and often silty sediments. Water worn quartzite cobbles occur naturally in the study area and these are discussed in more detail in the results section. No consolidated hard rock geological outcrops were observed. For further detail regarding the geology as well as potential palaeontological sensitivity of the site, see Pether (2010).

The study area was accessed by vehicle by taking the Vleesbaai – Boggomsbaai turnoff from the N2 and following direction boards to Vleesbaai (Figure 1). Immediately north of the Vleesbaai boundary fence a gravel road to the left leads to a farm entrance and the study area. Mr Christoffel Fivaz was contacted in advance for permission to conduct the study on his property.

1.4 Approach to the Study

Previous archaeological work conducted in the surrounding environment and immediate vicinity of the study area found that this portion of the coastline and immediate interior is archaeologically sensitive and includes the following tangible heritage related resources (Deacon 1989; Halkett & Hart 1996; Kaplan 2004, 1998a, 1998b, 1993 and Marean 2009):

- Structures and graves dating to the historic period
- Medium to high density stone artefact scatters of Middle Stone Age origin
- Shell middens and open sites of the Later Stone Age period contain shell and stone artefacts, and some shell middens contain Cape coastal pottery, ochre and ostrich egg shell; a stone artefact scatter includes high frequencies of ostrich egg shell fragments
- Mixed/disturbed stone scatters including specimens from all three Stone Age periods
- Mixed scatters of stone artefacts and shell
- Early and Middle Stone Age quarry sites representing exploitation locales of quartzite cobbles that are almost certainly associated with ancient river terraces

- Some artefact scatters are interpreted as sites representing activities associated with early stages of stone tool manufacture
- Several MSA stone artefacts refit, showing that they are in or near primary context
- A variety of formal tools were recorded
- Raw material for stone artefacts is overwhelmingly dominated by quartzite with low frequencies of silcrete and quartz
- A small rock shelter – Tiergat – that is likely to contain archaeological deposit
- To date, faunal remains are rare at documented sites
- Several documented archaeological occurrences are associated with ancient land surface or paleosols – such as those atop of or in consolidated red sands – and such contexts contain materials of potential use to research into ancient environments and climates

In reports of the above listed studies, numerous occurrences of the above site types were rated as of high significance and mitigation measures were recommended prior to the commencement of development activities. Interestingly, very few recommendations were made for significant sites or occurrences to be protected and conserved.

Ms Kathleen Schulz conducted research on the relevant archival and deeds records as well as the historical background search. Full details of the findings are presented in De Kock (2010). The aesthetic and visual branch of the Heritage Impact Assessment was conducted by Mr Alan Cave of Cave Klapwijk & Associates and the VIA report is appended to the HIA report (De Kock 2010). The palaeontological sensitivity of the study area and recommendations for mitigation are detailed by John Pether (2010). Other heritage related resources - and recommendations concerning mitigation - not discussed here are dealt with by Mr Stefan de Kock (2010).

On behalf of the client, Ms Louise-Mari van Zyl of Cape EAPrac provided background information and documents as well as layout plans and coordinate data for the study area (Figures 2 through 4, Table 1 and see van Zyl 2009). Initially, the study area was visited with Mr Stefan de Kock and Ms Kathleen Schulz, and thereafter the study was conducted independently.

During the first site visit it became clear that, due to their very high frequencies, it was not possible to map and/or record every archaeological occurrence. A decision was taken to map as many occurrences as possible, but only to record and photograph representative examples of the archaeological record, or occurrences of higher densities and/or significance. As a result of rain on the first day, only a cursory inspection was made that guided the approach to the study.

The foot survey first focused on previously undisturbed or less disturbed areas and less attention was paid to formerly cultivated areas. Then as much of the study area was covered in order to make an adequate assessment of materials in the previously disturbed areas. The existing quarry and dam areas were not inspected since materials were either removed entirely or severely displaced.

Indigenous vegetation is restricted to the river valley and immediate surroundings in the northern half of the study area (Figure 2 and Plates 1 through 4). Though impenetrable vegetation restricted the extent of the foot survey in the northern half of the study area,

adequate coverage and good archaeological visibility provided sufficient opportunity for archaeological inspection and subsequent assessment (Figure 5).

Survey tracks were fixed with a hand held Garmin Camo GPS to record the search area (Figure 5, gpx tracking file submitted to HWC and is available from author). Observations and photo localities were also fixed by GPS (Figure 5, Plates 1 through 13, Table 2 and Appendix A). Digital audio notes and a high quality, comprehensive digital photographic record were also made (full data set available from author). Localities of observations and photographs are established by matching the numbers on photographs with those of waypoints in Figure 5. If locality numbers are not visible or do not occur in Figure 5, then coordinate data for localities are available in Table 2 or Appendix A. Directions of views are indicated with compass bearing names like E is east; WSW is west south west, and so on. In several photographs, a hand held Garmin Camo GPS unit serves as a scale.

2. Results

On 2, 3 and 15 March 2010, in approximately 14.5 hours of survey, a distance of 29.8km was walked, covering an area of about 24ha, of which an average of around 30 to 50% provided good archaeological visibility (Figure 5 and Plates 1 through 13). Although 779 archaeological occurrences were mapped, these include clustered artefact scatters of variable density, continuous low density scatters as well as isolated occurrences. The red dots in Figure 5 provide an indication of the frequencies of archaeological occurrences in various areas in the study area (also see Appendix A).

Several thousand artefacts, overwhelmingly of Stone Age origin, were seen and it was considered unfeasible to map and record each one. Selected sites and occurrences considered as representative examples, or those of higher density and/or significance are described below and they are represented by the larger red dots in Figure 5 (Plates 5 through 13 and Table 2). The locality and context of occurrences are shown in Figure 5 as well as the associated Plate numbers as given below.

Due to their nature and very high frequencies, archaeological occurrences are not dealt with in isolation in terms of their significance and requirements for mitigation. Rather, the study area and its archaeological record are viewed as an integrated and interconnected micro environment that has been occupied by human ancestors and modern people for at least several 100 000 years, and potentially, for over a million years. The archaeological assessment as well as recommendations in mitigation is made from this perspective (see section 3 below). Archaeologically, a large part of the study area, most of the northern half, is considered very sensitive and as a whole, considered to be of high significance. The vast bulk of the cultural landscape of the study area is represented by the prehistoric archaeological record.

Overall, stone artefact scatters dominated by MSA pieces fall within the green polygon shown in Figure 5. LSA material in this area is all but swamped by MSA artefacts. The area inside the polygon contains very low numbers of ESA specimens, which are notably more common and plentiful outside the green polygon and on the higher lying, cultivated ground. The latter areas contain moderate frequencies of MSA pieces, but LSA artefacts are rare. It appears that, due to ploughing, ESA materials lying on and in ancient land surfaces were brought to the surface where they now lie in a disturbed context. The

ancient land surfaces were likely cut by a combination of higher sea level stands and river action. This may explain why ESA material is so rare on the river valley slopes and low lying ground. Clustering of MSA artefacts at several localities suggests that this material is less disturbed and where not eroded or exposed at the surface, they may be present in primary or near primary context.

Naturally occurring “outcrops” of water worn quartzite cobbles were observed at several localities. In most instances, where such concentrations of cobbles occur, stone artefact frequencies/densities are higher than in areas where cobbles are absent. While Stone Age quarrying activities – such as raw material acquisition and core reduction - are associated with these “outcrops”, several formal tools and retouched pieces also occur. It appears then that most of these occurrences represent both raw material acquisition as well as the final stages of stone tool manufacture.

Waypoint 33b - snd6534, img6526-34 (Figure 5, Plate 10 and Table 2)

This is a low density scatter of MSA stone artefacts including a retouched MSA flake in quartzite with an adze edge an end scraper edge and two of the sides are retouched to create notches that may also have served as adze edges.

Waypoint 44b - img6543-6 snd6546 (Figure 5, Plate 10 and Table 2)

This is a quartzite disc core of MSA age. Several isolated stone artefacts were mapped in this area and are dominated by MSA specimens. A few ESA artefacts occur, but no artefacts were seen that are definitively of LSA origin. As elsewhere, waypoints surrounding this one represent isolated pieces or ephemeral - and in places continuous - scatters. No medium to high density scatters were identified in this area.

Waypoint 78b - snd6582, img6560-82 (Figure 5, Plates 11 & 12 and Table 20)

This is an exposure of a medium density scatter of MSA artefacts occurring in a single vehicle dirt track. Stone artefacts are eroding from the sand body on either side of the vehicle track and artefact densities appear highest on the upper parts of the slope. Walking around on the edges of the vehicle track did not reveal archaeological materials, and it is assumed that in situ materials are located sub-surface and were exposed as a result of disturbance by the track and subsequent water erosion. There are numerous retouched stone artefacts – including scrapers, adzes and notched pieces - that are all in varying quality quartzite.

Waypoint 102b - snd6592, img6584-92 (Figure 5, Plate 12 and Table 2)

This is an extensive scatter of MSA stone artefacts including a few specimens of potential ESA age. The medium to medium-low density scatter is approximately 25 to 30m by 20m in extent and artefacts are almost exclusively in quartzite. Apart from flaked cobbles, chunks, flakes and so on, numerous pieces are retouched though adzes were the only identified formal tools. Technologically, the hand axe/cleaver in Plate 12 look like ESA artefacts, but their physical appearance – lack of patination and wear – suggest a later age.

Waypoint 107 – snd6303, img6288-6303 (Figure 5, Plate 5 and Table 2)

This is an exposed, cleared area where red sands (possible palaeosol –Kaplan 2004, Marean 2009, Pether 2010) are disturbed by various activities (vehicle, pedestrian, domestic

animals) associated with a nearby farm house to the WSW. The sands are removed to where calcrete surfaces are exposed in places. The area is clearly and substantially disturbed. A medium to low density scatter – approximately 20m by 15m in extent - of various LSA and MSA artefacts occur in the exposed area. Artefacts are mostly in quartzite, only two pieces of quartz were observed and one piece is in silcrete. Retouched pieces occur in moderate numbers and include adzes, slugs and a hammer stone.

Waypoint 108 – snd6308, img6307-8 (Figure 5, Plates 2 & 5 and Table 2)

This is a photo locality, a panorama looking from WNW to roughly N across the ravine showing vegetation cover and exposed calcrete. A few stone artefacts – in low densities - were also observed at this locality represented by a mixture of LSA and MSA material. The stone scatter is dominated by quartzite flakes, with two retouched pieces observed – no formal tools were seen – and a single silcrete flake was photographed.

Waypoint 109 – snd6312, img6309-12 (Figure 5, Plate 5 and Table 2)

This is a small exposed area in bush where stone artefacts lie atop reddish sands in low densities. The area containing artefacts is partially deflated. Stone artefacts include a mix of MSA and LSA materials with the latter occurring in higher numbers. Artefacts consist of flaked quartzite pieces and a single retouched piece was recorded.

Waypoint 114 - snd6316, img6313-6 (Figure 5, Plate 5 and Table 2)

This is an exposed patch of red sands (possible palaeosol) among vegetation including isolated stone artefacts of LSA and MSA age, in this case a quartzite flake and a disc core. Nodules and chunks of calcrete are ubiquitous though no solid bedding of calcrete occurs at this locality. Several isolated artefacts in close proximity were seen and it is not viable to record each occurrence. Nevertheless, waypoints for most artefacts or clusters of artefacts were fixed with a hand held GPS unit.

Waypoint 118 - snd6323, img6317-23 (Figure 5, Plate 6 and Table 2)

This is an exposure of a small erosion event where sands are cut through, exposing calcrete nodules and chunks, but no calcrete bedding is evident. This is a low density scatter of stone artefacts in an area of around 10m². 15 artefacts were counted including one adze. Raw material is exclusively quartzite of which some are fine grained. The bulk of the artefacts are of LSA origin with only one or two MSA pieces occurring.

Waypoint 120 – snd6325, img6324-5 (Figure 5, Plate 5 and Table 2)

Several pieces of ceramic and porcelain are strewn about in the vicinity of the existing house and lie among a lot of modern rubble, metal, glass, bone (cattle and sheep) and other debris and domestic refuse. The density of this material - associated with the historic period - is highest within 30 to 50m of the house and drops off significantly as one walks away from the house. Historic material, however, was seen across nearly the entire study area. While some of this material is likely from as early as the 18th Century, the date of their use and subsequent discard are presently unknown as observed materials are not in primary context. No formal dump or refuse pit was found, but if present, such a feature can be studied to determine the age of materials as well as behaviour information about the people who inhabited the farm house. For further detail on the historic period see the HIA report (De Kock 2010).

Waypoint 135 – snd6327, img6326-7 (Figure 5 and Table 2)

This is a small clearing in a densely bushed area where isolated stone artefacts lie atop red sands in an area of approximately 15m². 7 artefacts, all quartzite, were seen and included a mix of MSA and LSA implements.

Waypoint 144 – snd6337, img6328-6337 (Figure 5, Plates 2, 6 & 7 and Table 2)

This is a photo locality; panorama with view from W to ENE and an archaeological occurrence. On the edge of the plateaux above the ravine, among high densities of calcrete nodules and chunks are isolated and scattered stone artefacts. At this locality is a large quartzite core of MSA origin (Plate 7).

Waypoint 155 - snd6341, img6338-41 (Figure 5, Plate 7 and Table 2)

This is a shallowly eroded area – mostly sheet wash – where a low density scatter of LSA and MSA artefacts were recorded including a fine example of a MSA hammer stone. Other specimens include flaked cobbles, flakes retouched pieces and chunks. A few pieces of potentially ESA origin were also seen in the surrounding area. This scatter is continuous with no discernable edges. All artefacts are in quartzite of variable quality.

Waypoint 163 - snd6351, img6342-51 (Figure 5, Plate 7 and Table 2)

This is a medium low density scatter of predominantly flaked quartzite including flaked cobbles, flakes, chunks, retouched pieces, adzes and notched pieces. The scatter occurs in a stony, small and shallow erosion gully amidst bushes. A single piece of flaked quartz was noted. The extent of the scatter – according to its visible extent – is roughly 15m by 4m.

Waypoint 166 - snd6359, img6352-9 (Figure 5, Plate 6 and Table 2)

This is an extensive medium density scatter of mostly LSA stone artefacts though some pieces of MSA origin occur. Artefacts are mostly in quartzite with only a few pieces of quartz noted and include flaked cobbles, flaked quartzite without cortex, cores, chunks and numerous retouched pieces. The most common formal tools are adzes or notched pieces and several scrapers were recorded. The scatter is about 15m by 15m in extent though lower density materials extend beyond the medium density cluster.

Waypoint 167 - snd6363, img6360-3 (Figure 5, Plate 8 and Table 2)

This is an isolated, unifacially retouched quartzite specimen with delicate intentional flaking along the entire length of one edge. The artefact may be classified as a side scraper and was found in an area where sediments are disturbed by sheet wash erosion. While this occurrence is isolated, low density scatters of stone artefacts occur in the surrounding area.

Waypoint 173 - snd6365, img6364-5 (Figure 5 [similar to Plate 6 for waypoint 166] and Table 2)

This is an occurrence like that described above for waypoint 166 and is an extensive medium density scatter of predominantly LSA stone artefacts, but specimens of MSA origin occur. Quartzite is the dominant raw material and only a few pieces of quartz were seen.

Artefacts include flaked cobbles, flaked quartzite, cores, chunks, a hammer stone and numerous retouched pieces. Formal tools are restricted to adzes or notched pieces.. The scatter is about 10m by 15m in extent, but lower density materials are found beyond this concentration.

Waypoint 174 - snd6370, img6366-70 (Figure 5, Plate 8 and Table 2)

Archaeological materials occur in and around a stone pile on the edge of a formerly ploughed and cultivated field. Stone piles like this one are common on the edges of ploughed areas as they are removed from cultivated fields to minimize damage to ploughs' steel blades. Usually only larger stones are removed and smaller ones remain in the field. The stone pile in question contains numerous ESA artefacts including hammer stones, cores, bifacial hand axes and cleavers. A large MSA core was also found in the pile and adjacent to it and in the field, numerous stone tools of ESA and MSA were observed while LSA specimens occurred in low numbers. All artefacts are in quartzite of variable quality. This may be a function of how and what is churned to the surface during ploughing. Nonetheless, it seems that the ploughed areas commonly contain MSA and ESA artefacts and this pattern is not evident on the river valley slopes and lower lying areas.

Waypoint 212 - snd6377, img6373-7 (Figure 5, Plate 8 and Table 2)

This is an isolated MSA tortoise core made on a large flake of quartzite cobble. The context of the find is a previously ploughed field and artefacts occur every few meters or less. A mix of MSA and ESA artefacts were observed while no LSA material was seen in this area. All artefacts seen in this area are in quartzite. The scatter of Stone Age material in the ploughed area is sparse, but continuous and densities rise and fall across space.

Waypoints 272-275 - snd6387, img6381-7 (Figure 5, Plates 8 & 9 and Table 2)

This is an exposure of mostly MSA artefacts with a few LSA pieces noted. No ESA material was seen at this occurrence. The exposure is a result of both sheet wash erosion and a small, shallow erosion gully or "wash-out". Several artefacts are still imbedded in what appear to be *in situ* sediments. Stone artefacts occur in medium to medium high densities and are mostly in quartzite though a small number of quartz pieces were seen. Artefacts include hammer stones, flaked cobbles, flaked quartzite, flakes, chunks and some retouched pieces, but no formal tools were recorded. Materials of similar composition extend in lower densities from this occurrence.

Waypoint 282b - snd6610, img6607-10 (Figure 5, Plate 12 and Table 2)

This is one of a few sparse to isolated archaeological occurrences on the high ground of a ploughed and cultivated field. In this area only materials of ESA origin were identified though MSA artefacts were identified and recorded elsewhere in the same ploughed field. Stone artefacts are exclusively in quartzite and included bifacial hand axes and large cores. The same pattern as that described for the formerly ploughed field to the south of the river was seen here.

Waypoint 285 - snd6391, img6388-91 (Figure 5, Plate 6 and Table 2)

This is another occurrence of isolated and sparse clusters of quartzite stone artefacts of predominantly MSA origin though the occasional ESA artefact was observed. The ESA

artefact shown in Plate 6 is completely patinated and heavily weathered with a large flake scar clearly visible.

Waypoint 289 - snd6392, img6392-7 (Figure 5, Plate 9 and Table 2)

This is a chalky, crumbly and friable outcrop of calcrete that is eroding into nodules that are spilling down the slope to the north. The imbedded in and eroding out of the calcrete are specimens of shell including a bivalve reminiscent of a white mussel (*Donax Sera*). This material may be of palaeontological significance and a palaeontologist should be consulted in this regard. The calcrete most likely post dates the ancient land surface as evidenced by red sands on higher ground.

Waypoint 382b - snd6619, img6611-19 (Figure 5, Plate 13 and Table 2)

This is a small graveyard situated 270m SSE of the old farm house at waypoint 430. The wooden paddock style fence enclosing the graves appears to be a relatively modern installation. The current occupants – not family of the deceased - of the farm house clean and service the enclosed area. 5 graves are aligned on an E-W axis and the larger graves with headstones face east. Facing the inscriptions on the gravestones of the two larger graves, they read as follows;

Hier Rus
Johan J.
Van Rensburg
Geb. 8 Jan. 1875
Oorl. 4 Bebr. 1948
Nou is hy tuis in sy
Hemels Huis

Hier Rus
Alberta P.
Van Rensburg
Geb Koen
Geb. 24 Mei 1884
Oorl. 28 Junie 1910
Nou is sy tuis in haar
Hemels Huis

Further details of the graves, headstones and decorations are shown in Plate 13. The three remaining graves are those of children including one young child and two sub-adults. These graves are simple, without headstones or inscriptions and plain. It is anticipated that earlier historic occupants associated with this property – probably pre latest subdivision – are buried in the nearby surroundings. No further cultural materials are associated with the graveyard. Along with the house referred to below, the graveyard will be incorporated into the development ensuring its protection and conservation in perpetuity (van Zyl 2009). For further detail on the historic period see the HIA report (De Kock 2010).

Waypoint 397 - snd6413, img6408-13 (Figure 5, Plate 9 and Table 2)

This is a crude ESA bifacial hand axe situated in a medium density scatter of MSA stone artefacts spread across an area of about 20m by 15m. The vast bulk of the artefacts are of MSA origin though a few pieces of LSA age were seen. All identified pieces are in quartzite and include hammer stones, flakes cobbles, flaked quartzite, cores, chunks, large and smaller flakes, and several pieces are retouched. Identified formal tools include adzes, notched pieces and scrapers that occur in low numbers.

Waypoint 430b - snd6631, img6625-31 (Figure 5, Plate 13 and Table 2)

This is the only house – other structures occur – south of the river valley that occurs on the property. Aerial photographs of the early 1940s show that the house was already

present, and it is probably considerably older than 60 years (also see De Kock 2010). Material culture associated with the house is mixed and includes modern discarded materials as well as older pieces such as porcelain and ceramic. While some of the older material may have been manufactured as early as the 18th Century, the time of their being discarded – last used – cannot be determined from their current, mixed and disturbed context. A focal rubbish dump could yield information of this nature, but none were identified in the study area. Regardless, the house, along with the small graveyard, will be incorporated into the development and will therefore be protected and conserved in the long term (van Zyl 2009). For further detail on the historic period see the HIA report (De Kock 2010).

Waypoint 102b - snd6592, img6584-92 (Figure 5, Plate 12 and Table 2)

This is an extensive scatter of MSA stone artefacts including a few specimens of potential ESA age. The medium to medium-low density scatter is approximately 25 to 30m by 20m in extent and artefacts are almost exclusively in quartzite. Apart from flaked cobbles, chunks, flakes and so on, numerous pieces are retouched though adzes were the only identified formal tools. Technologically, the hand axe/cleaver in Plate 12 look like ESA artefacts, but their physical appearance – lack of patination and wear – suggest a later age.

Table 2. Coordinate and descriptive data for selected observations and archaeological occurrences.

Name	Description img=image file snd=sound file	Datum: WGS 84 Lat/Lon dec.degrees	Datum: WGS 84 Grid: SA National	Age	Type	Extent	Density	Cultural
024b	img6519-23 snd6523 panrma	S34.28910 E21.90126	21 Y-082981 X3796097		photo			
030b	img6254-5 snd6255 profile	S34.28834 E21.90106	21 Y-082963 X3796013		photo			
033b	MSA img6526-34 snd6534	S34.28695 E21.89980	21 Y-082848 X3795858	MSA	open	indet	low	adze, scraper, notched
044b	MSA img6543-6 snd6546	S34.28715 E21.89986	21 Y-082853 X3795880	MSA	open	continuous	low	disc core
046b	img&snd6547 exposure/disturbed	S34.28738 E21.89938	21 Y-082810 X3795906		photo			
057b	img6549-51 snd6551 trench	S34.28778 E21.90081	21 Y-082941 X3795951		photo			
064b	img6552-6557 snd6557 pnrma	S34.28744 E21.90084	21 Y-082944 X3795913		photo			
073b	img6558-9 snd6559	S34.28662 E21.89892	21 Y-082768 X3795820		photo			
078b	MSA img6560-82 snd6582	S34.28669 E21.90034	21 Y-082898 X3795830	MSA	open	40m ²	medium	scrapers, adzes, notched pieces
090b	img&snd6583 veg	S34.28667 E21.90148	21 Y-083004 X3795828		photo			
102b	MSA img6584-92 snd6592	S34.28619 E21.90226	21 Y-083076 X3795776	MSA	open	600m ²	medium	adzes, retouched pieces, ?hand axe?
107	MSA/LSA img6288-6303 snd6303	S34.28634 E21.90853	21 Y-083653 X3795798	LSA-MSA	open	250m ²	med-low	adzes, slugs, hammer stone, retouch
108	LSA/MSA img6307-8 snd6308	S34.28596 E21.90798	21 Y-083603 X3795755	LSA-MSA	open	indet	medium	few retouched pieces
109	MSA/LSA img6309-12 snd6312	S34.28577 E21.90783	21 Y-083589 X3795733	LSA-MSA	open	indet	low	retouched piece
114	LSA/MSA img6313-6 snd6316	S34.28560 E21.90764	21 Y-083572 X3795714	LSA-MSA	photo	indet	low	disc core
118	LSA/MSA img6317-23 snd6323	S34.28562 E21.90751	21 Y-083559 X3795716	LSA-MSA	open	10m ²	low	includes an adze colonial & modern
120	Historic img6324-5 snd6325	S34.28566 E21.90712	21 Y-083524 X3795720	historic	open	indet	low	domestic debris
135	LSA/MSA img6326-7 snd6327	S34.28595 E21.90525	21 Y-083351 X3795752	LSA-MSA	open	15m ²	low	chunks & flakes
144	MSA & photo locality img6328-6337 snd6337	S34.28606 E21.90417	21 Y-083252 X3795763	MSA	open	200m ²	low	large MSA core quartzite hammer stone, possibly a few ESA pieces
155	MSA/LSA img6338-41 snd6341	S34.28683 E21.90333	21 Y-083174 X3795847	LSA-MSA	open	continuous	low	pieces
163	MSA/LSA img6342-51 snd6351	S34.28775 E21.90280	21 Y-083124 X3795949	LSA-MSA	open	60m ²	med-low	adzes, notched pieces
165b	img6593-7 snd6597 pnrma	S34.28475 E21.90672	21 Y-083488 X3795619		photo			
166	LSA-MSA img6352-9 snd6359	S34.28795 E21.90258	21 Y-083103 X3795971	LSA-MSA	open	225m ²	medium	adzes, notched pieces, scrapers
167	LSA/MSA img6360-3 snd6363	S34.28825 E21.90219	21 Y-083067 X3796004	LSA-MSA	open	indet	isolated	unifacially retouched, possible scraper
167b	img6598-6601 snd6601 pnrma	S34.28516 E21.90077	21 Y-082939 X3795660		photo			
173	LSA-MSA img6364-5 snd6365	S34.28855 E21.90197	21 Y-083047 X3796037	LSA-MSA	open	150m ²	medium	adzes, notched pieces

Table 2 (continued). Coordinate and descriptive data for selected observations and archaeological occurrences.

Name	Description img=image file snd=sound file	Datum: WGS 84 Lat/Lon dec.degrees	Datum: WGS 84 Grid: SA National	Age	Type	Extent	Density	Cultural
174	ESA/MSA img6366-70 snd6370	S34.28861 E21.90207	21 Y-083056 X3796044	MSA-ESA	open	indet	ex situ	hand axes, cleavers, hammer stones, cores, flakes, chunks
212	MSA/ESA img6373-7 snd6377	S34.28757 E21.90727	21 Y-083536 X3795933	MSA-ESA	open	continuous	sparse	tortoise core
263	img6378-80 snd6380	S34.28678 E21.90328	21 Y-083169 X3795842		photo			
264b	img6602-6 snd6606 pnrma	S34.28379 E21.90455	21 Y-083289 X3795512		photo			
272	MSA img6381-7 snd6387	S34.28655 E21.90331	21 Y-083172 X3795816	MSA	open	150m ²	med-high	flaked cobbles, flaked quartzite, flakes, retouch, chunks, etc
273	MSA img6381-7 snd6387	S34.28655 E21.90337	21 Y-083177 X3795816	MSA	open	150m ²	med-high	flaked cobbles, flaked quartzite, flakes, retouch, chunks, etc
274	MSA img6381-7 snd6387	S34.28657 E21.90338	21 Y-083179 X3795818	MSA	open	150m ²	med-high	flaked cobbles, flaked quartzite, flakes, retouch, chunks, etc
275	MSA img6381-7 snd6387	S34.28657 E21.90342	21 Y-083182 X3795818	MSA	open	150m ²	med-high	flaked cobbles, flaked quartzite, flakes, retouch, chunks, etc
282b	ESA img6607-10 snd6610	S34.28425 E21.89980	21 Y-082851 X3795559	ESA	open	indet	sparse	hand axes, cores
285	MSA-ESA img6388-91 snd6391	S34.28615 E21.90372	21 Y-083210 X3795773	MSA-ESA	open	indet	sparse	example of ESA piece probable marine shell in calcrete
289	calcrete w shell img6392-7 snd6392	S34.28597 E21.90411	21 Y-083246 X3795753	palaeo	profile	indet	NA	
349	img6398-6402 snd6402 pnrma	S34.28514 E21.90308	21 Y-083152 X3795660		photo			
369	img6403-7 snd6407 pnrma	S34.28546 E21.89897	21 Y-082773 X3795692		photo			
382b	graves img6611-19 snd6619	S34.28954 E21.90824	21 Y-083623 X3796152	historic	graves	about 36m ²	NA	5 graves, 2 adults, 1 young child and 2 sub- adults; to conserve
383b	img6620-4 snd6624 pnrma	S34.29004 E21.90848	21 Y-083644 X3796207		photo			
397	MSA-ESA img6408-13 snd6413	S34.28655 E21.90228	21 Y-083078 X3795815	MSA-ESA	open	300m ²	medium	ESA hand axe, adzes, notched pieces, scrapers modern & colonial, to conserve
430b	old house img6625-31 snd6631	S34.28713 E21.90790	21 Y-083594 X3795884	historic	structure	NA	NA	

3. Sources of Risk, Impact Identification and Assessment

All development activities as listed in section 1.1 above will have a permanent negative impact on archaeological resources as well as the prehistoric cultural landscape of the study area (also see De Kock 2010). Specifically, during the construction phase, vegetation clearing, earthmoving activities and construction activities; and during the operational phase, increased vehicle and pedestrian traffic, maintenance and so on will have a direct negative impact on archaeological and heritage related resources. For all development options, the most extensive and intense impact of development activities will occur in the southern - previously disturbed and cultivated – half of the property.

Even so, earthmoving activities will penetrate sediments unaffected by previous disturbances. Ploughing only penetrates sediments to a depth of between 30 and 50cm while construction related earthmoving will reach depths of up to 1.5m and more. With knowledge of the archaeological record in the study area as described above, the presence of subsurface archaeological materials is certain. Archaeological monitoring of earthmoving activities associated with the proposed project will avoid and/or minimize negative impacts on archaeological and palaeontological resources.

Although the old farm house and graveyard fall within the development footprint, these features will be incorporated into the development for their protection and conservation in the long term (van Zyl 2009). Further concerns and recommendations regarding these historic features are detailed in the HIA report (De Kock 2010). If deemed necessary by HWC, a specialist Historical Archaeologist and Vernacular Architect can provide further detail and recommendations regarding historical structures.

The northern half of the study area contains an unusually rich Stone Age archaeological record and specifically, that of the MSA. In my experience, and to the best of my knowledge, this is one of the highest density MSA stone artefact occurrences recorded in an open context and in such a small area on this part of the Cape south coast. Any development in this area will have a permanent negative impact on archaeological resources as well as the prehistoric cultural landscape. While alternative 4 for the development footprint excludes much of this northern area, the footprint boundary requires further modification in order to avoid damage to the archaeological record and heritage related resources (see executive summary and section 4 for clarification). It is suggested that mitigation measures in the form of archaeological excavation, mapping, sampling, and so on are not feasible and will not do justice to the prehistoric record in the study area. Table 3 summarizes the potential impact of the proposed development on archaeological and palaeontological resources with and without mitigation.

Table 3. Potential impact on and loss of archaeological resources

	With Mitigation	Without Mitigation
Extent	Local	Local
Duration	Permanent	Permanent
Intensity	Medium to Low	High
Probability	High	High
Significance	Medium to High	High
Status	Medium to High	High
Confidence	High	High

Provided that recommended mitigation measures (also see De Kock 2010 and Pether 2010) - as approved by Heritage Western Cape - are implemented, it is recommended that the proposed development be approved.

4. Required and Recommended Mitigation Measures

The following measures are required:

- The old farm house and graves are protected by the National Heritage Resources Act (No. 25 of 1999) and any alteration or changes to these heritage resources requires a permit from HWC (structures) and or the South African Heritage Resources Agency (graves).
- In the event that vegetation clearing and earthmoving activities expose archaeological or paleontological materials, such activities must stop and Heritage Western Cape must be notified immediately.
- If archaeological materials are exposed through earthmoving activities, then they must be dealt with in accordance with the National Heritage Resources Act (No. 25 of 1999) and at the expense of the developer(s) and/or property owner(s).
- Unmarked human burials may occur anywhere in the landscape and are often exposed during earthmoving activities. Human remains are protected by law and, if older than 60 years, are dealt with by Heritage Western Cape (Mr. Nick Wiltshire 021 483 9685) or the State Archaeologist at the South African Heritage Resources Agency (Mrs. Mary Leslie who can be reached at 021 462 4502).

It is recommended that:

- Due to the rich nature of the archaeological record in the study, even in previously disturbed areas, HWC may require an application for a destruction permit from the developer. HWC should be consulted in this regard.
- The old farm house and graves should be protected and conserved via incorporation into the development.
- Alternative 4 of the development layout and footprint should be adopted. While the plans indicating the realignment of the development boundary – as recommended here and by other specialists - are not available at this time, the revised boundary runs along the juncture between the disturbed area and natural vegetation in the N and NW. This ensures that the archaeological record is not impacted by the development. The recommended boundary for the development footprint is shown in red in Figure 4. The revised layout plans will be supplied by Ms van Zyl of Cape EAPrac in the next week or so, at which time they will be submitted to HWC. From an archaeological perspective, the area to the north and west of the red boundary line should be a conservation or nature area.
- It is certain that sub surface archaeological remains will occur in formerly disturbed and/cultivated areas and it is also likely that an old rubbish dump – associated with the farm house or possible earlier dwellings – occurs in the study area and therefore, earthmoving activities should be monitored by - or under the supervision of - a professional archaeologist. Archaeological monitoring will ensure that negative impact on subterranean archaeological and paleontological materials is avoided or minimized (see Pether 2010). Paleontological materials do occur in geological deposits present in the study area and monitoring will allow early detection of such materials if exposed during earthmoving.

Also see recommendations for mitigation presented by De Kock (2010) and Pether (2010)

References

- Deacon, H.J. 1989. Archaeological Impact Assessment Mossqass Project – Vleesbaai. Report prepared for Mossqass. Department of Archaeology, University of Stellenbosch.
- De Kock, S. 2010. DRAFT – Notification of Intent to Develop (NID) and Phase One Heritage Impact Assessment: Amanzi Moya Development: Vleeschbaai 251/Remainder, Misgunst-Aan-De-Gouritz 257/2 & Keerom 264 Vlees Bay, Mossel Bay District. Perception Heritage Planning.
- Halkett, D.J. and Hart, T.J.G. 1996. Phase 1 Archaeological Investigation of land at the mouth of the Gouritz River. Prepared for The Grootrug Partnership by the Archaeology Contracts Office, University of Cape Town.
- Kaplan, J. 2004. Phase 1 Archaeological Impact Assessment: proposed development Phase II and Phase III Nautilus Bay, Mossel Bay. Prepared for Hilland Associates. Agency for Cultural Resource Management.
- Kaplan, J. 1998a. Archaeological study portion of portion 8 of the Farm Buffelsfontein No. 250 Boggomsbaai, southern Cape. Report prepared for CODEV. Agency for Cultural Resource Management.
- Kaplan, J. 1998b. Archaeological study portion 8 of the Farm Buffelsfontein No. 250, Vleesbaai, southern Cape. Report prepared for CODEV. Agency for Cultural Resource Management.
- Kaplan, J. 1993. The state of archaeological information in the coastal zone from the Orange River to Ponta do Ouro. Report prepared for the Department of Environment Affairs and Tourism. Agency for Cultural Resource Management.
- Marean, C.W. 2009. Comments on Archaeological Sites and Geological Localities at Nautilus Bay near Mossel Bay – prepared for Heritage Western Cape as a response to “Phase 1 Archaeological Impact Assessment Proposed development Phase II and Phase III Nautilus Bay Mossel Bay”. Prepared for Hilland Associates by Jonathan Kaplan.
- Pether, J. 2010. Palaeontological Impact Assessment (desktop study): proposed development, Amanzi Moya Estate, Remainder Vleeschbaai 251, Vleesbaai, Mossel Bay Municipality, Eden District, Western Cape – with fossil find procedures.
- van Zyl, L. 2009. Amended Final Scoping Report in terms of the National Environmental Management Act & National Environmental Management: Waste Act: Amanzi Moya Estate on Farm Keerom 264 & Portion 2 Farm Misgunst aan de Gouritz 257. Cape EAPrac.

Figures and Plates (on following pages)

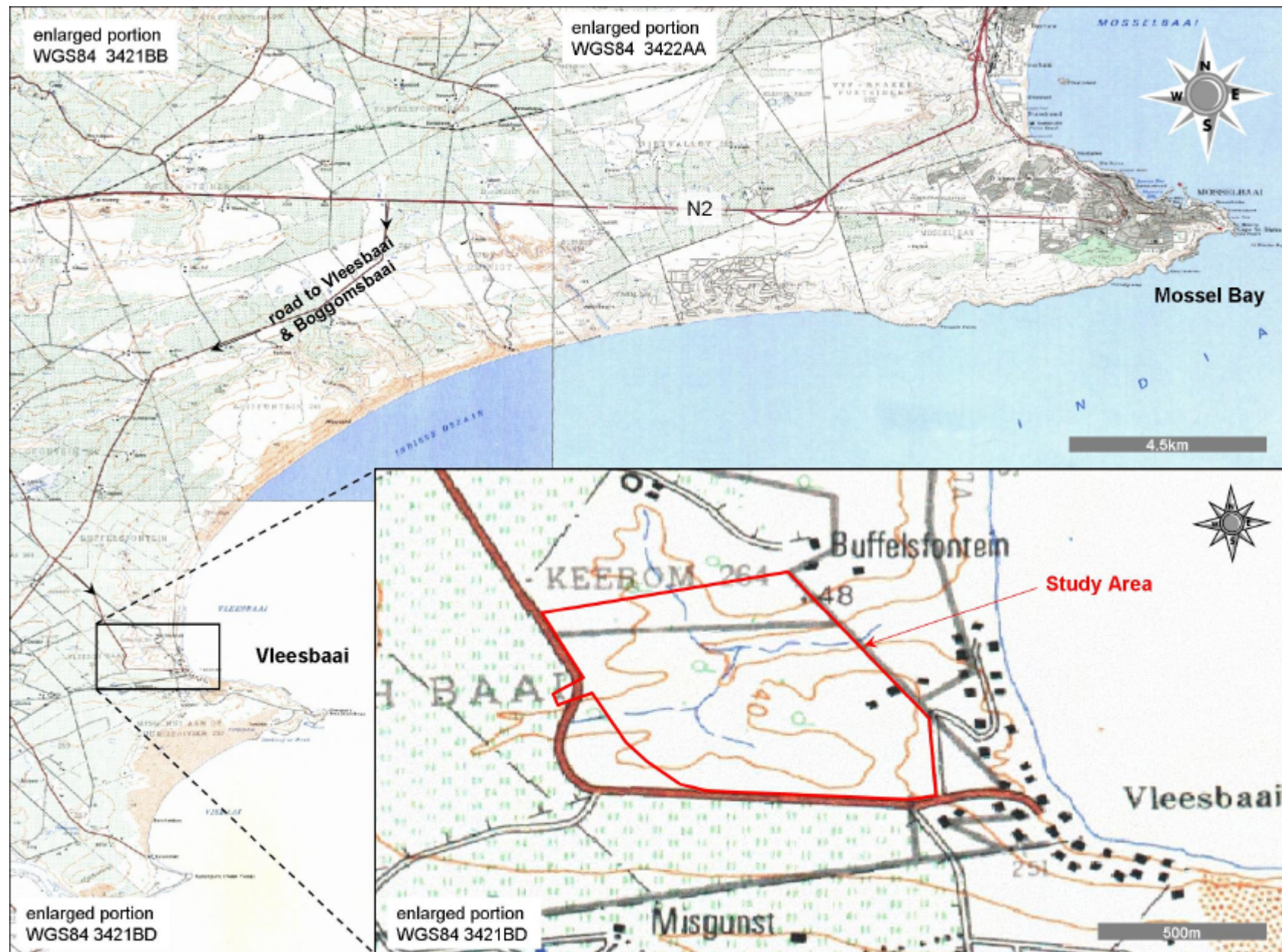


Figure 1. General location of study area relative to Mossel Bay and Vleesbaai on the Cape South Coast.

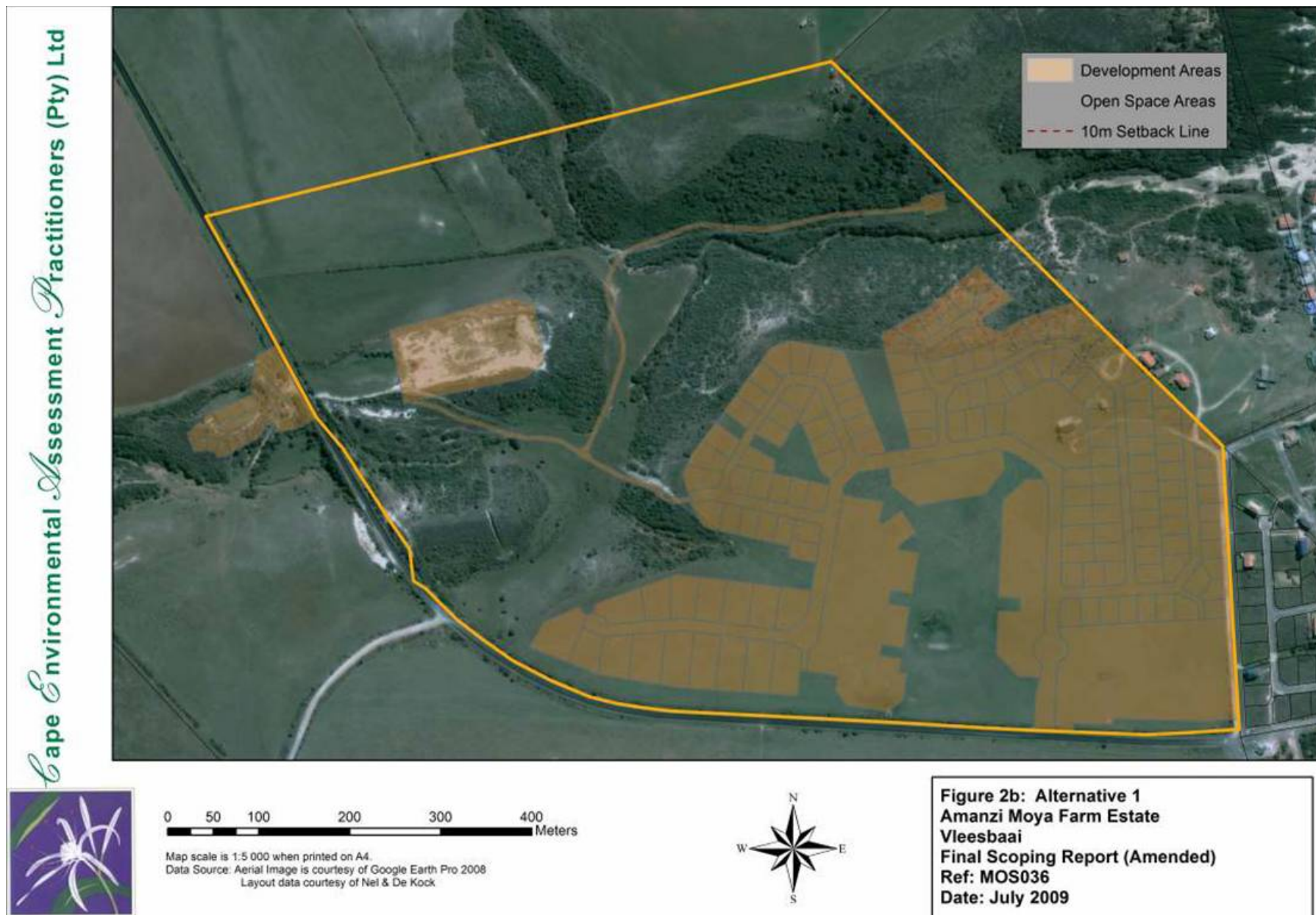


Figure 2. Development layout Alternative 1 (courtesy Cape EAPrac).

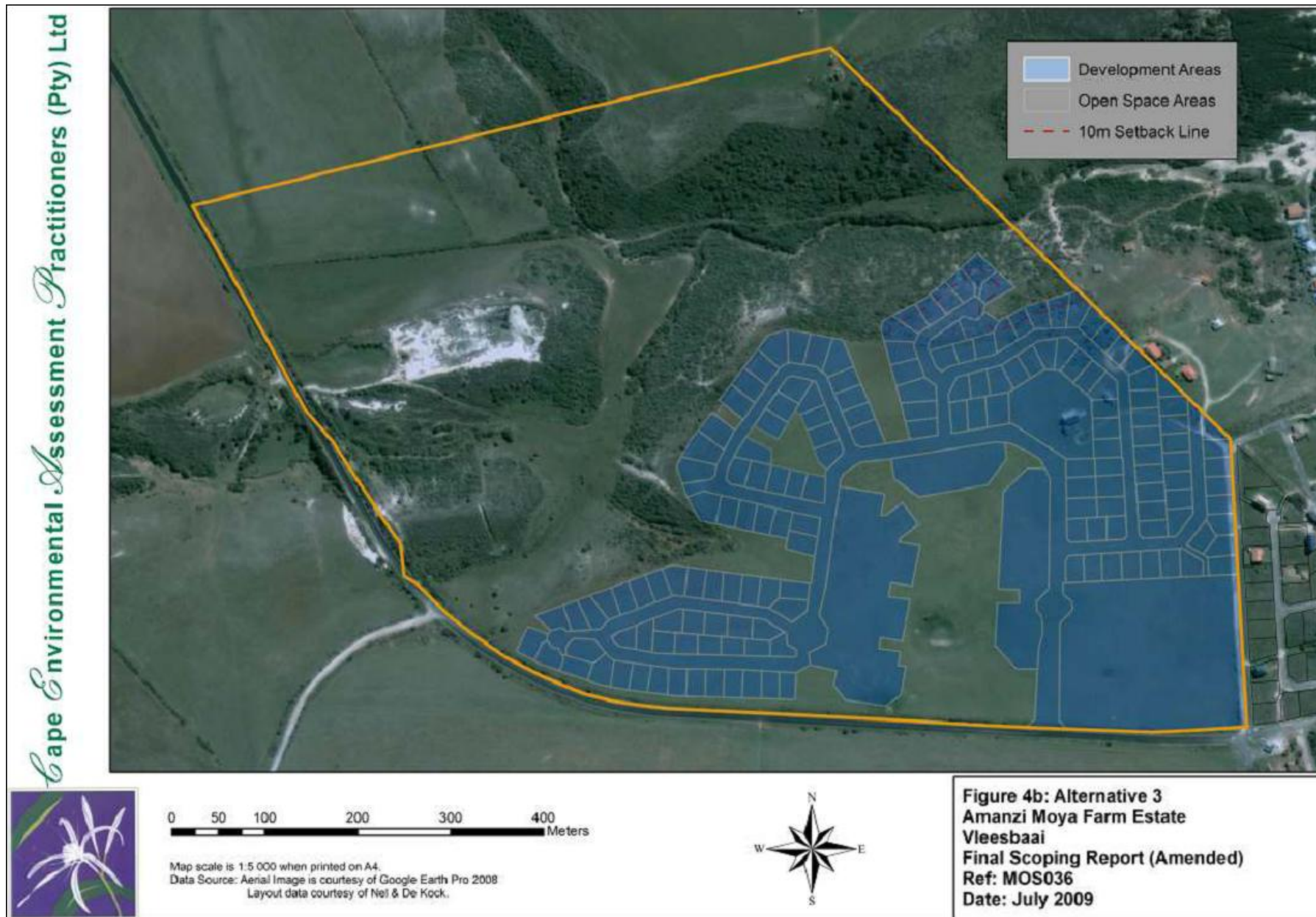


Figure 3. Development layout Alternative 3 (courtesy Cape EAPrac).



0 50 100 200 300 400 Meters

Map scale is 1:5 000 when printed on A4.
Data Source: Aerial Image is courtesy of Google Earth Pro 2008
Layout data courtesy of Nel & De Kock



**Figure 5b: Alternative 4
Amanzi Moya Farm Estate
Vleesbaai
Final Scoping Report (Amended)
Ref: MOS036
Date: July 2009**

Figure 4. Development layout Alternative 4. Red outline represents the recommended development boundary (courtesy Cape EAPrac).



Figure 5. As Figure 2 with overlay of survey walk tracks (yellow) and archaeological occurrences (red dots) (courtesy Cape EAPrac).



Plate 1. Panoramic examples of topography, vegetation cover and disturbances.



Plate 2. Panoramic examples of topography, vegetation cover and disturbances.



Plate 3. Panoramic examples of topography, vegetation cover and disturbances.

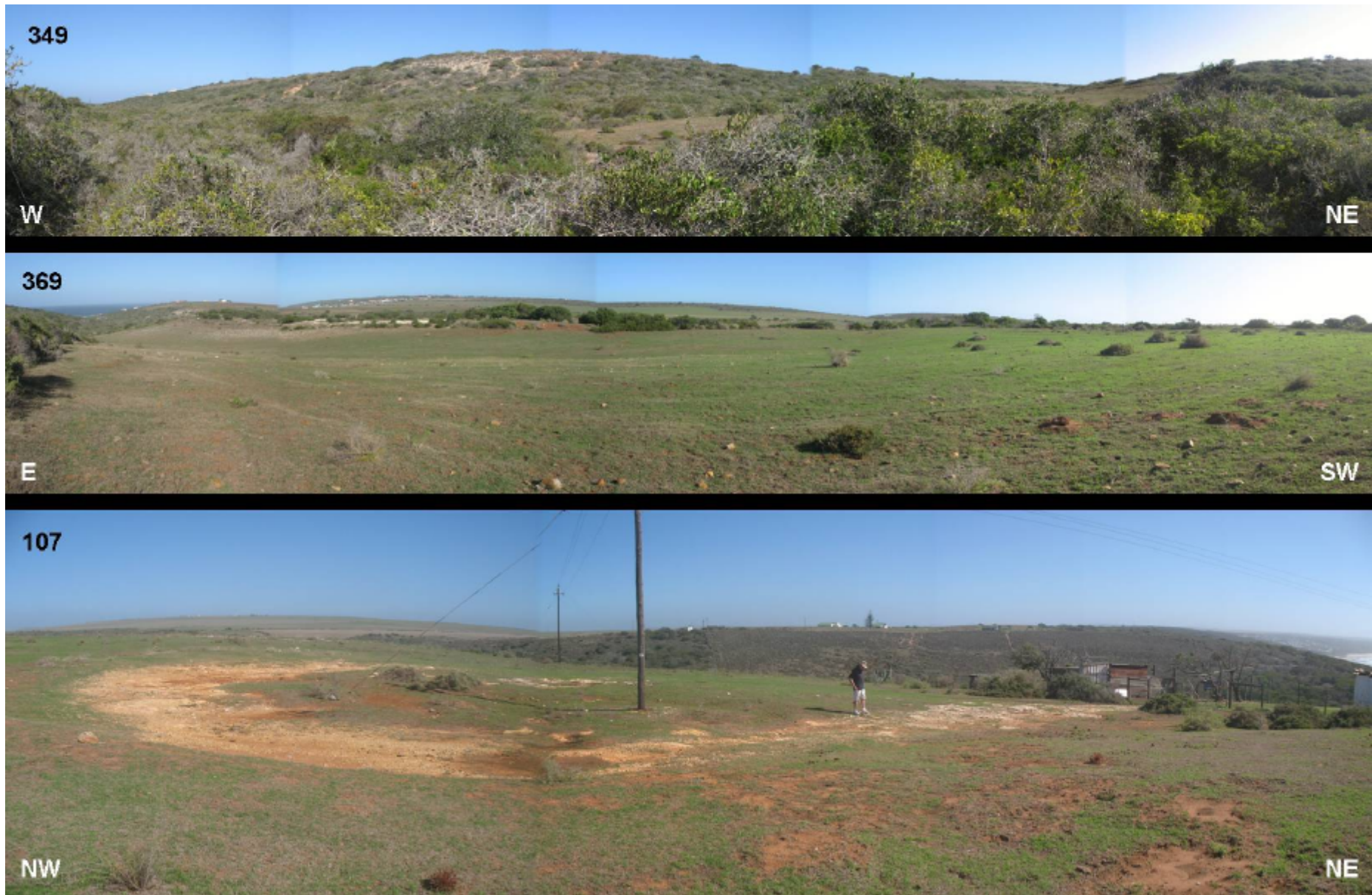


Plate 4. Panoramic examples of topography, vegetation cover and disturbances.

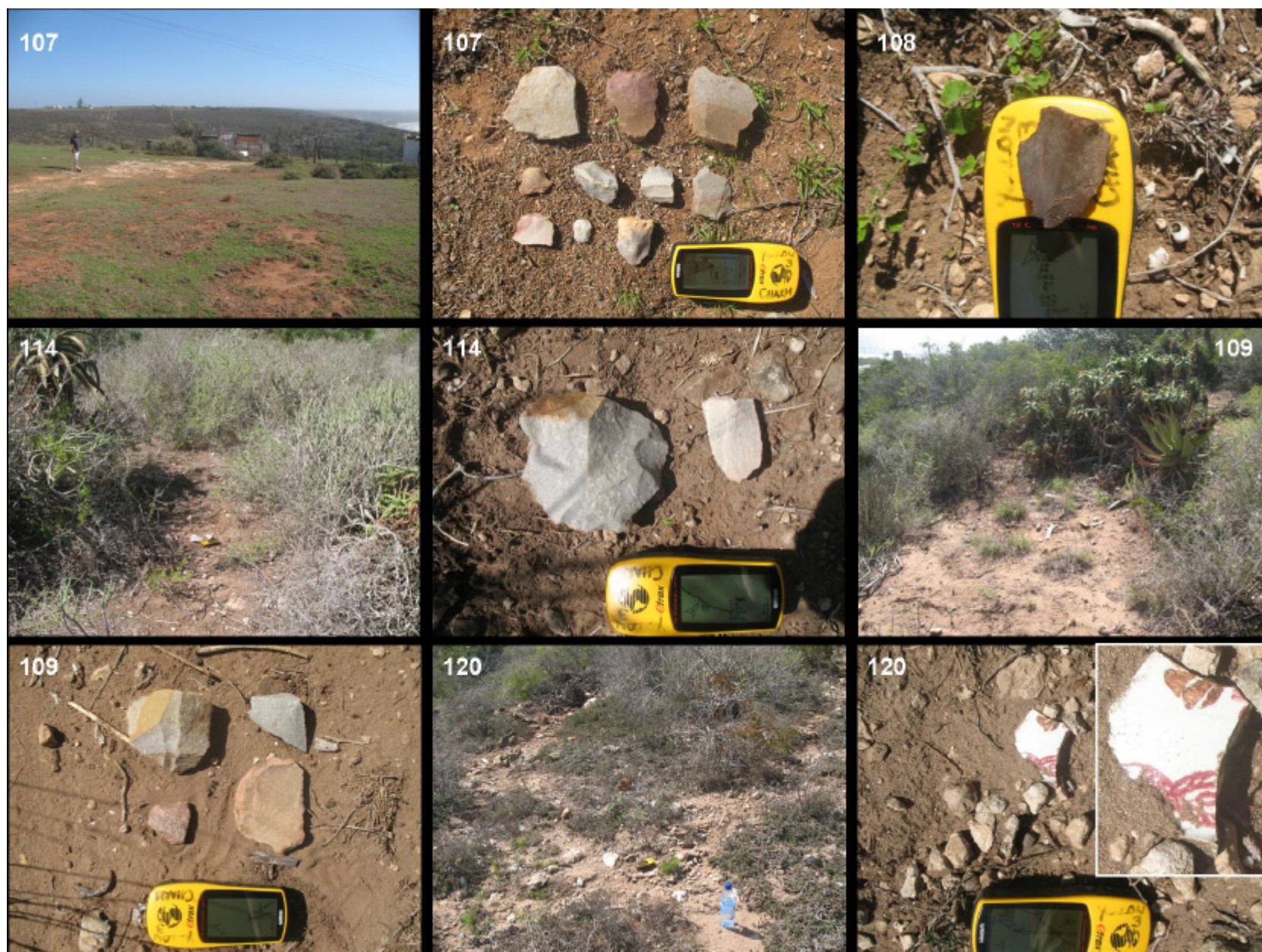


Plate 5. Examples of archaeological occurrences and contexts of finds. See text and Table 2 for more details.

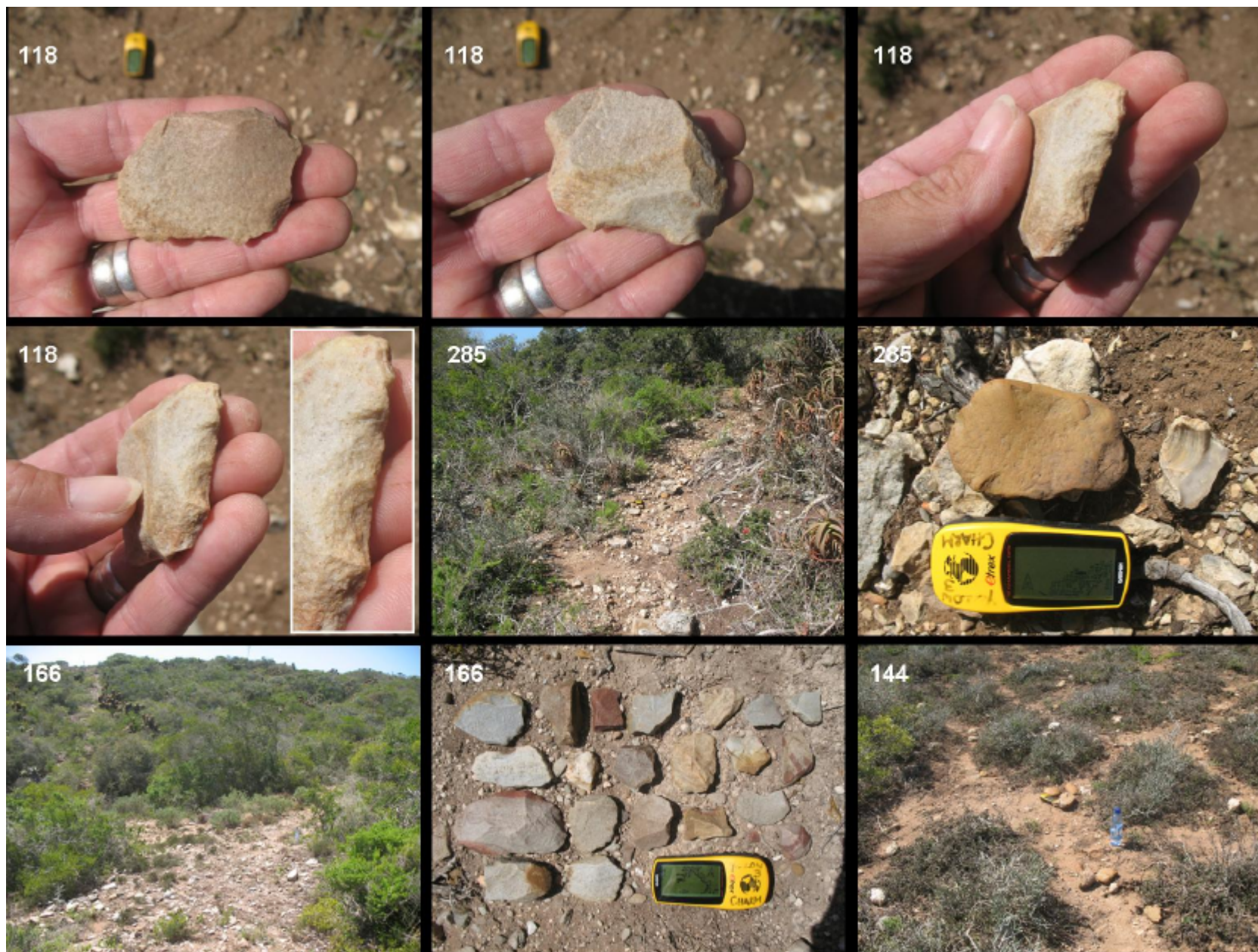


Plate 6. Examples of archaeological occurrences and contexts of finds. See text and Table 2 for more details.

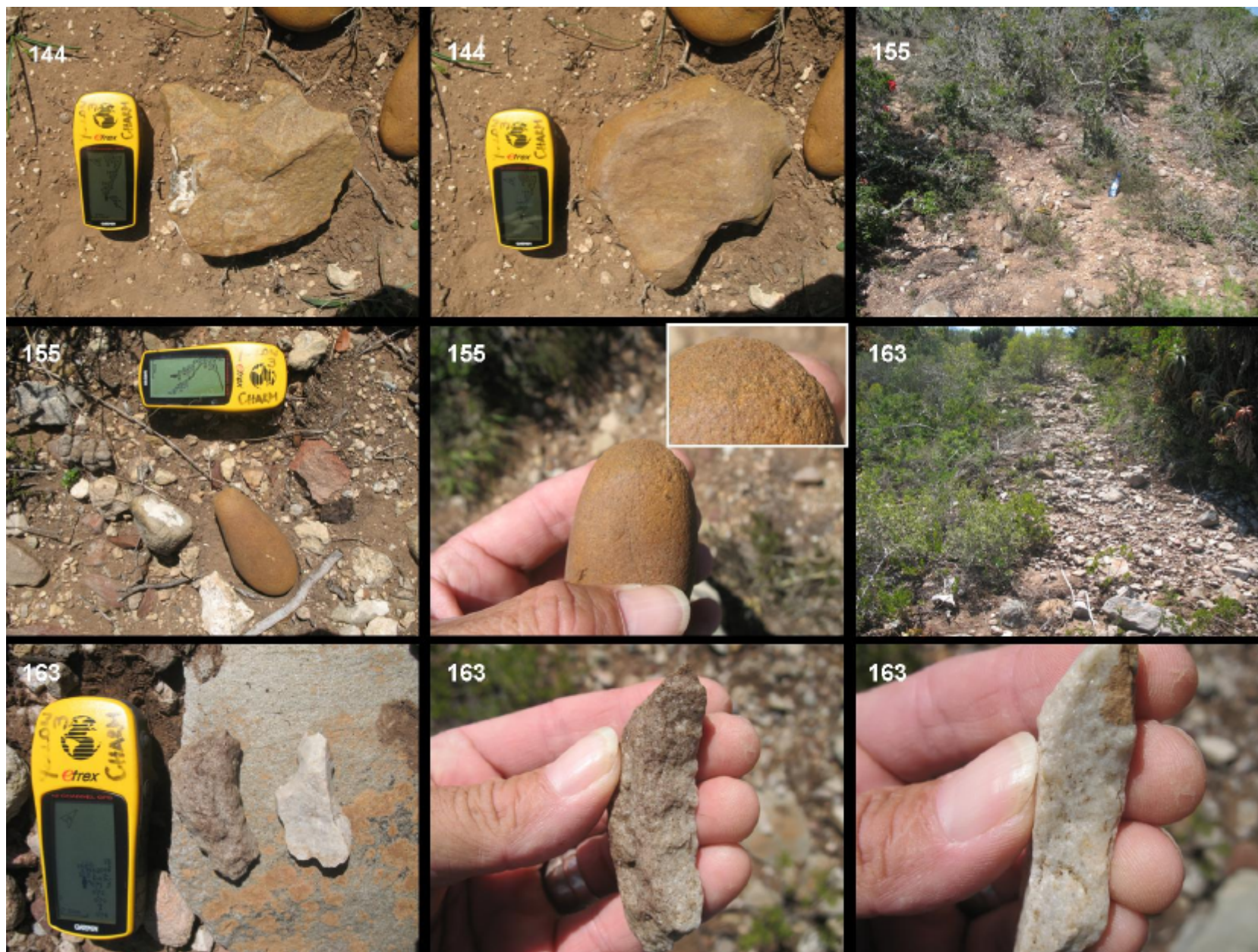


Plate 7. Examples of archaeological occurrences and contexts of finds. See text and Table 2 for more details.

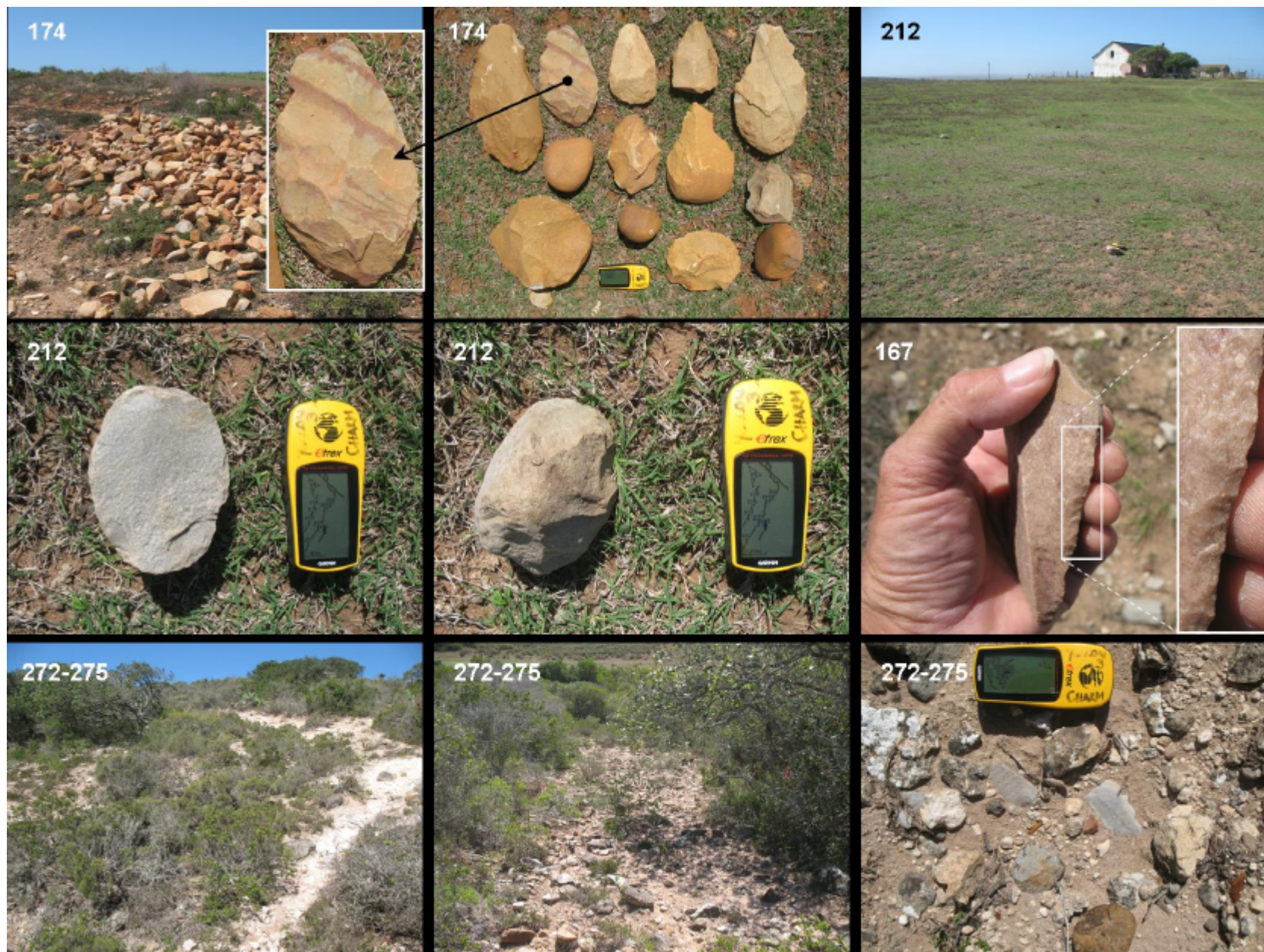


Plate 8. Examples of archaeological occurrences and contexts of finds. See text and Table 2 for more details.

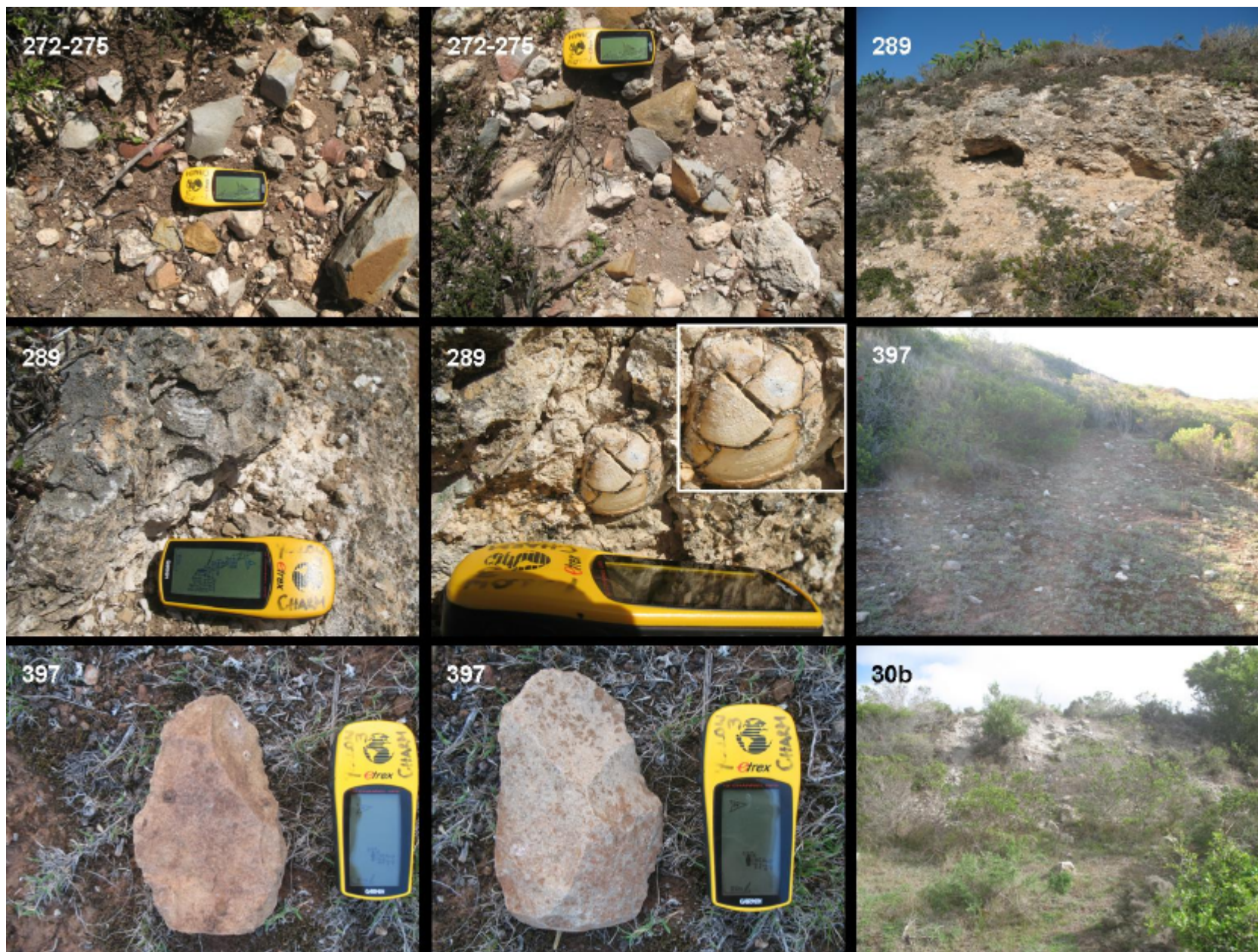


Plate 9. Examples of archaeological and palaeontological occurrences and contexts of finds. See text and Table 2 for more details.

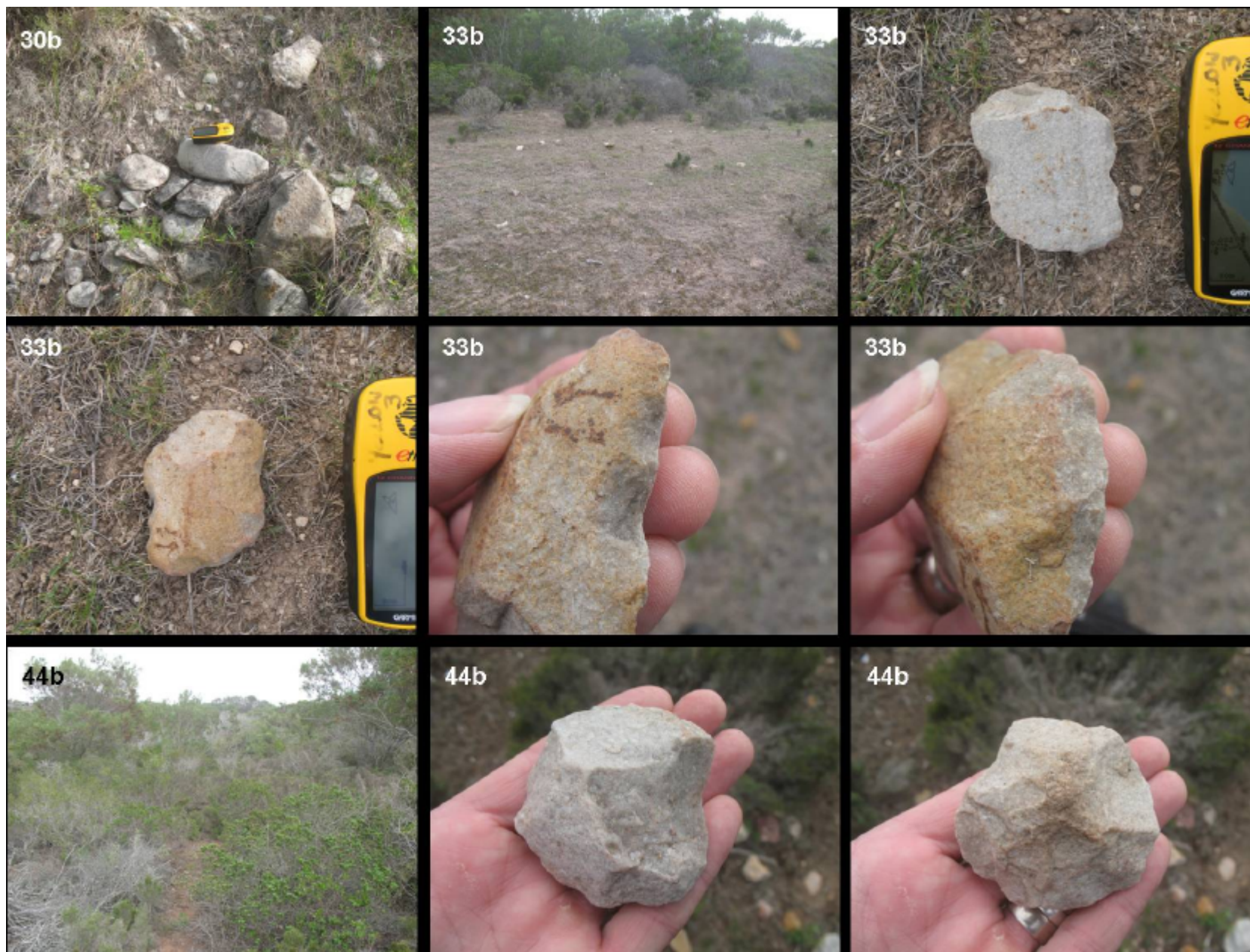


Plate 10. Examples of archaeological occurrences and contexts of finds. See text and Table 2 for more details.

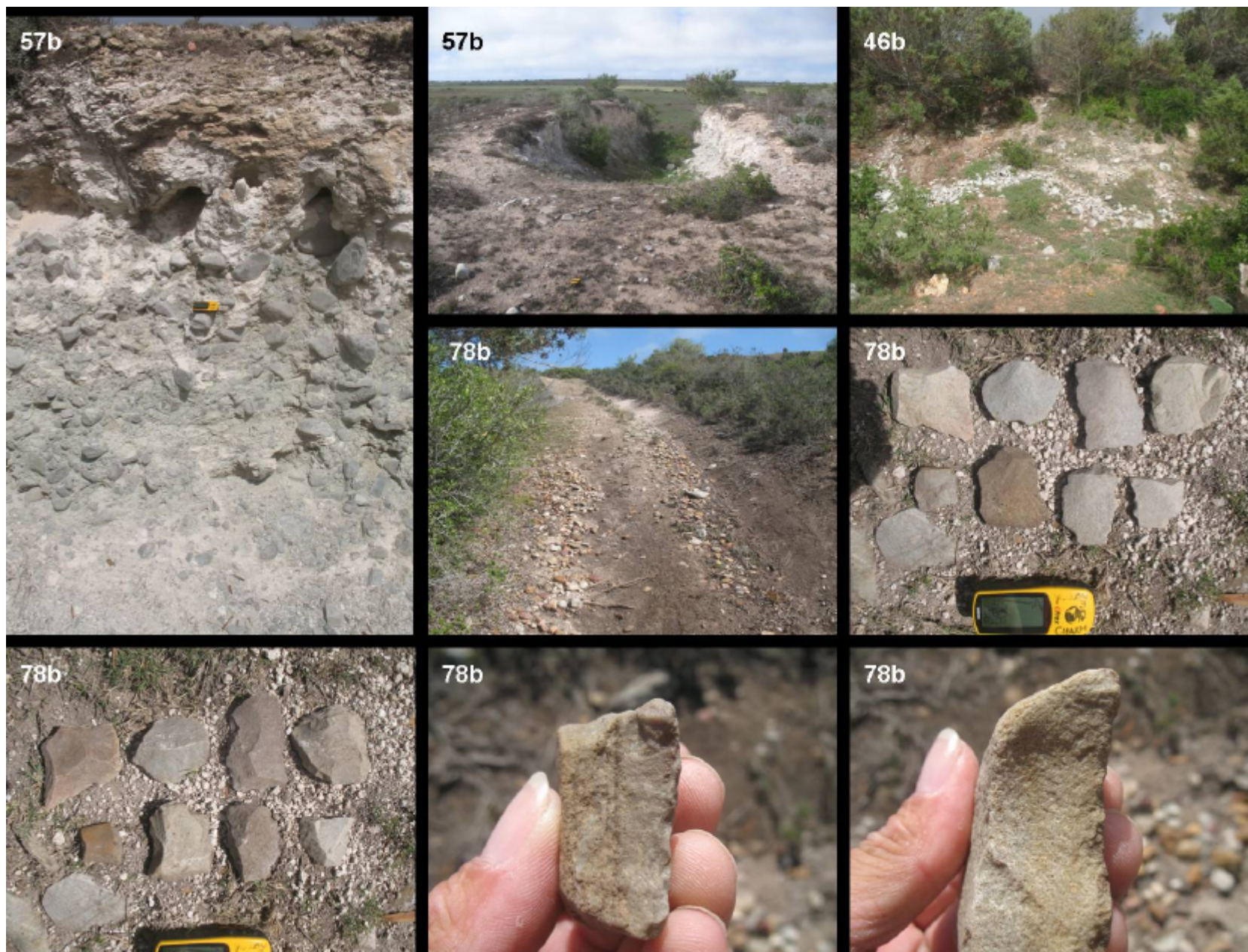


Plate 11. Examples of archaeological occurrences and contexts of finds. See text and Table 2 for more details.

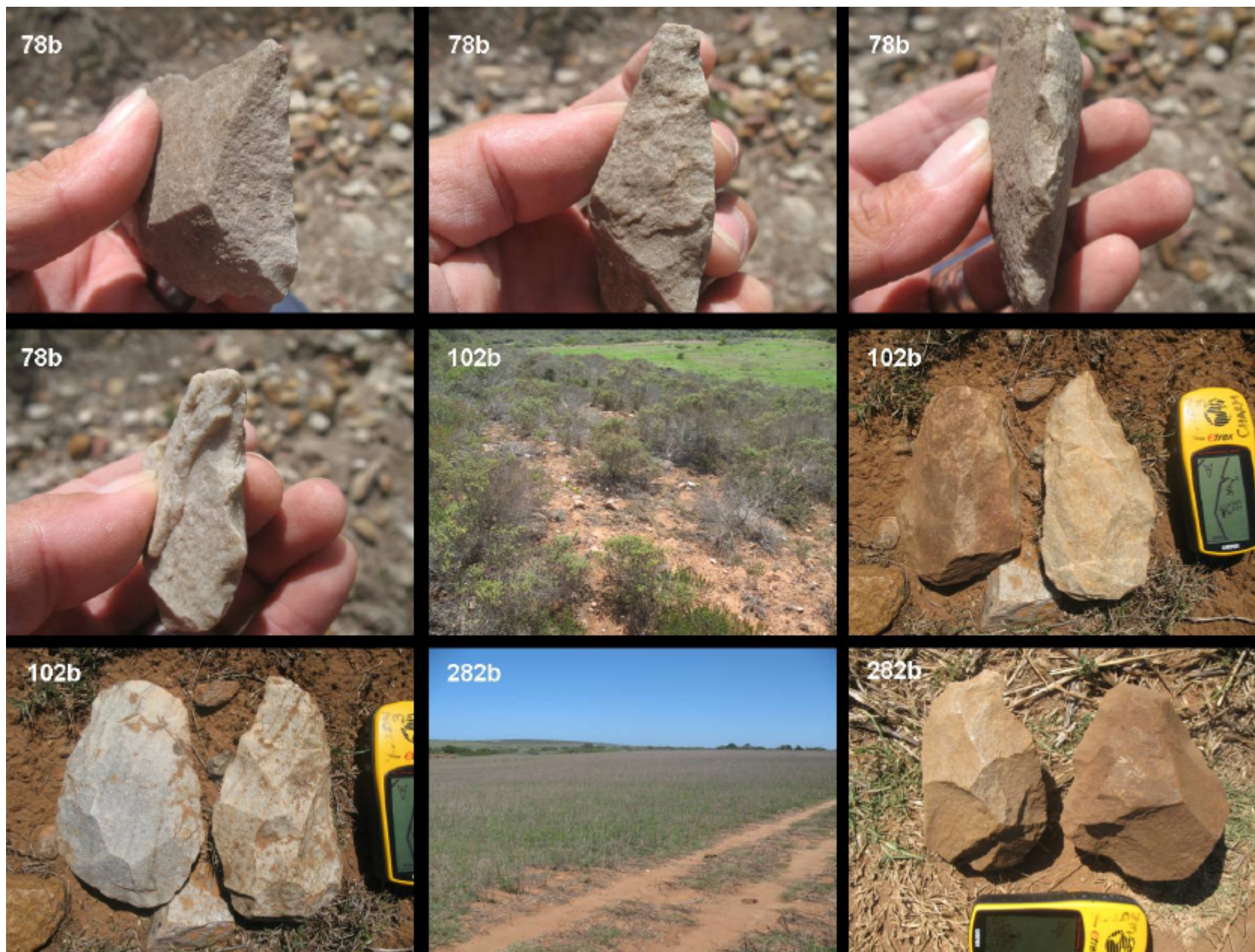


Plate 12. Examples of archaeological occurrences and contexts of finds. See text and Table 2 for more details.

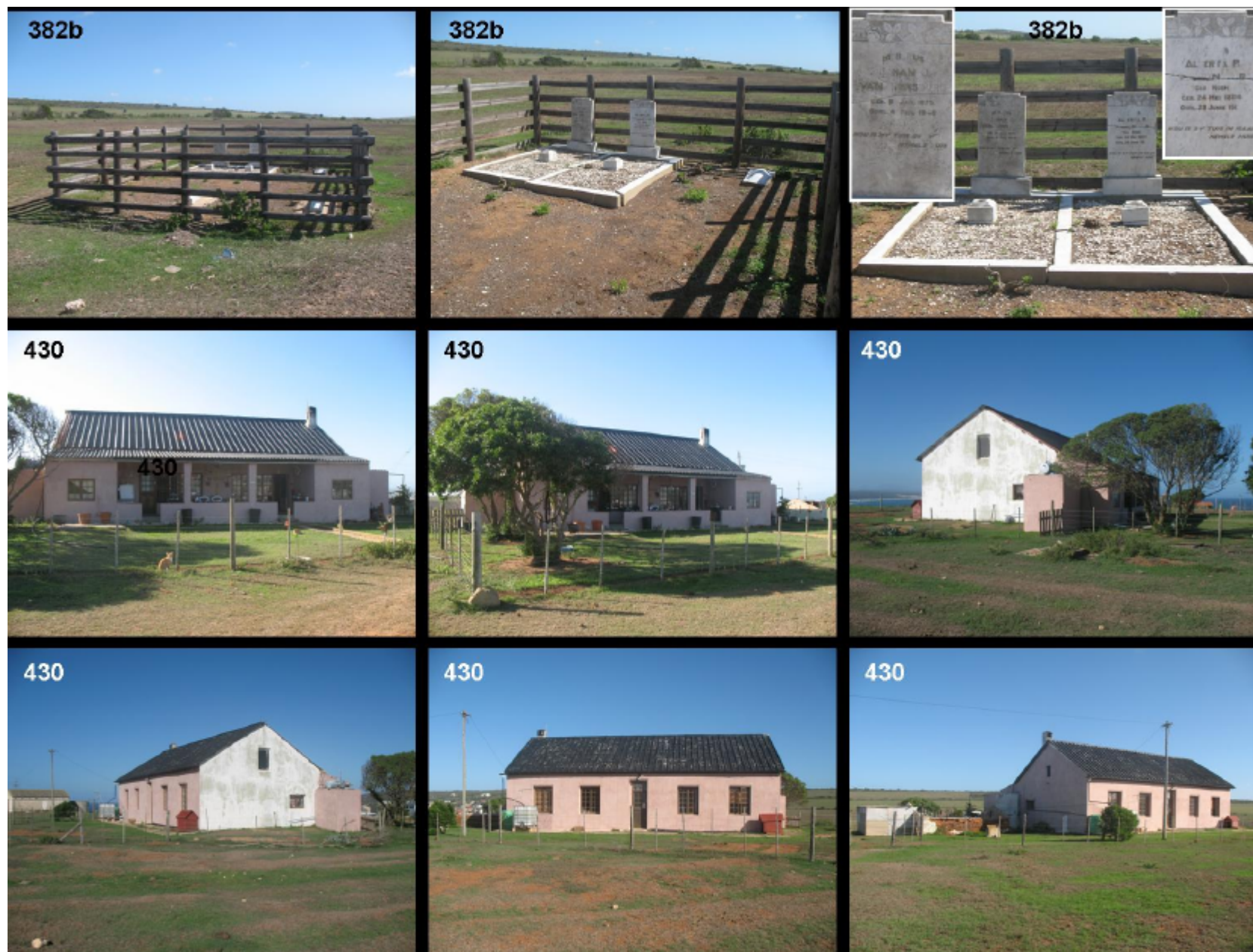


Plate 13. Graves and old farm house. See text and Table 2 for more details.

Appendix A

Name	Description img=image file snd=sound file	Datum: WGS 84 Lat/Lon dec.degrees	Datum: WGS 84 Grid: SA National
018b	Stone Age artefacts	S34.28951 E21.90245	21 Y-083090 X3796144
019b	Stone Age artefacts	S34.28944 E21.90218	21 Y-083065 X3796136
020b	Stone Age artefacts	S34.28934 E21.90179	21 Y-083029 X3796124
021b	Stone Age artefacts	S34.28927 E21.90166	21 Y-083017 X3796117
022b	Stone Age artefacts	S34.28921 E21.90155	21 Y-083007 X3796110
023b	Stone Age artefacts	S34.28910 E21.90137	21 Y-082991 X3796097
024b	img6519-23 snd6523 panrma	S34.28910 E21.90126	21 Y-082981 X3796097
025b	Stone Age artefacts	S34.28889 E21.90115	21 Y-082971 X3796075
026b	Stone Age artefacts	S34.28875 E21.90100	21 Y-082957 X3796059
027b	Stone Age artefacts	S34.28872 E21.90095	21 Y-082953 X3796055
028b	Stone Age artefacts	S34.28862 E21.90083	21 Y-082941 X3796044
029b	Stone Age artefacts	S34.28850 E21.90061	21 Y-082922 X3796031
030b	img6254-5 snd6255 profile	S34.28834 E21.90106	21 Y-082963 X3796013
031b	Stone Age artefacts	S34.28696 E21.90048	21 Y-082911 X3795860
032b	Stone Age artefacts	S34.28700 E21.90022	21 Y-082887 X3795864
033b	MSA img6526-34 snd6534	S34.28695 E21.89980	21 Y-082848 X3795858
034b	Stone Age artefacts	S34.28693 E21.89958	21 Y-082828 X3795856
035b	Stone Age artefacts	S34.28693 E21.89944	21 Y-082816 X3795855
036b	Stone Age artefacts	S34.28689 E21.89934	21 Y-082806 X3795851
037b	Stone Age artefacts	S34.28687 E21.89921	21 Y-082794 X3795848
038b	Stone Age artefacts	S34.28695 E21.89912	21 Y-082786 X3795857
039b	Stone Age artefacts	S34.28707 E21.89933	21 Y-082805 X3795871
040b	Stone Age artefacts	S34.28708 E21.89955	21 Y-082825 X3795872
041b	Stone Age artefacts	S34.28712 E21.89979	21 Y-082848 X3795877
042b	Stone Age artefacts	S34.28707 E21.89997	21 Y-082864 X3795871
043b	Stone Age artefacts	S34.28726 E21.90047	21 Y-082910 X3795893
044b	MSA/LSA img6543-6 snd6546	S34.28715 E21.89986	21 Y-082853 X3795880
045b	Stone Age artefacts	S34.28715 E21.89967	21 Y-082837 X3795880
46	Stone Age artefacts	S34.28691 E21.90922	21 Y-083716 X3795861
046b	img&snd6547 exposure/disturbed	S34.28738 E21.89938	21 Y-082810 X3795906
47	Stone Age artefacts	S34.28648 E21.90868	21 Y-083667 X3795813
047b	Stone Age artefacts	S34.28739 E21.89941	21 Y-082812 X3795907
48	Stone Age artefacts	S34.28588 E21.90799	21 Y-083604 X3795746
048b	Stone Age artefacts	S34.28733 E21.90009	21 Y-082874 X3795900
49	Stone Age artefacts	S34.28591 E21.90785	21 Y-083591 X3795750
049b	Stone Age artefacts	S34.28740 E21.90070	21 Y-082931 X3795909
50	Stone Age artefacts	S34.28594 E21.90784	21 Y-083590 X3795753
050b	Stone Age artefacts	S34.28766 E21.90051	21 Y-082913 X3795937
51	Stone Age artefacts	S34.28609 E21.90721	21 Y-083532 X3795768
051b	Stone Age artefacts	S34.28770 E21.90012	21 Y-082878 X3795942
52	Stone Age artefacts	S34.28612 E21.90712	21 Y-083523 X3795772
052b	Stone Age artefacts	S34.28765 E21.90032	21 Y-082895 X3795936
53	Stone Age artefacts	S34.28627 E21.90585	21 Y-083406 X3795787
053b	Stone Age artefacts	S34.28759 E21.90032	21 Y-082896 X3795929
54	Stone Age artefacts	S34.28618 E21.90485	21 Y-083314 X3795776
054b	Stone Age artefacts	S34.28752 E21.90009	21 Y-082875 X3795922
55	Stone Age artefacts	S34.28615 E21.90477	21 Y-083307 X3795773
055b	Stone Age artefacts	S34.28759 E21.89970	21 Y-082839 X3795929
56	Stone Age artefacts	S34.28629 E21.90412	21 Y-083247 X3795788
056b	Stone Age artefacts	S34.28765 E21.89955	21 Y-082825 X3795935
57	Stone Age artefacts	S34.28632 E21.90406	21 Y-083241 X3795792
057b	img6549-51 snd6551 trench	S34.28778 E21.90081	21 Y-082941 X3795951
58	Stone Age artefacts	S34.28638 E21.90402	21 Y-083238 X3795798
058b	Stone Age artefacts	S34.28758 E21.90087	21 Y-082946 X3795928
59	Stone Age artefacts	S34.28639 E21.90401	21 Y-083237 X3795799
059b	Stone Age artefacts	S34.28735 E21.90129	21 Y-082985 X3795903
60	Stone Age artefacts	S34.28696 E21.90361	21 Y-083199 X3795862
060b	Stone Age artefacts	S34.28835 E21.90024	21 Y-082888 X3796014
61	Stone Age artefacts	S34.28702 E21.90354	21 Y-083193 X3795868
061b	Stone Age artefacts	S34.28844 E21.90018	21 Y-082882 X3796023
62	Stone Age artefacts	S34.28709 E21.90349	21 Y-083188 X3795876
062b	Stone Age artefacts	S34.28826 E21.90005	21 Y-082871 X3796004
63	Stone Age artefacts	S34.28727 E21.90333	21 Y-083173 X3795896
063b	Stone Age artefacts	S34.28748 E21.90101	21 Y-082960 X3795918
64	Stone Age artefacts	S34.28748 E21.90313	21 Y-083155 X3795920
064b	img6552-6557 snd6557 pnrma	S34.28744 E21.90084	21 Y-082944 X3795913
65	Stone Age artefacts	S34.28744 E21.90313	21 Y-083155 X3795915
065b	Stone Age artefacts	S34.28686 E21.90091	21 Y-082951 X3795849

66	Stone Age artefacts	S34.28742 E21.90311	21 Y-083153 X3795913
066b	Stone Age artefacts	S34.28684 E21.90078	21 Y-082939 X3795846
67	Stone Age artefacts	S34.28741 E21.90305	21 Y-083147 X3795912
067b	Stone Age artefacts	S34.28680 E21.90061	21 Y-082923 X3795842
68	Stone Age artefacts	S34.28742 E21.90301	21 Y-083144 X3795912
068b	Stone Age artefacts	S34.28688 E21.90016	21 Y-082882 X3795850
69	Stone Age artefacts	S34.28759 E21.90305	21 Y-083147 X3795931
069b	Stone Age artefacts	S34.28687 E21.90005	21 Y-082872 X3795850
70	Stone Age artefacts	S34.28770 E21.90307	21 Y-083149 X3795944
070b	Stone Age artefacts	S34.28688 E21.90000	21 Y-082867 X3795850
71	Stone Age artefacts	S34.28770 E21.90308	21 Y-083150 X3795944
071b	Stone Age artefacts	S34.28679 E21.89939	21 Y-082811 X3795840
72	Stone Age artefacts	S34.28778 E21.90321	21 Y-083162 X3795953
072b	Stone Age artefacts	S34.28680 E21.89937	21 Y-082809 X3795840
73	Stone Age artefacts	S34.28784 E21.90334	21 Y-083174 X3795960
073b	img6558-9 snd6559	S34.28662 E21.89892	21 Y-082768 X3795820
74	Stone Age artefacts	S34.28799 E21.90357	21 Y-083194 X3795977
074b	Stone Age artefacts	S34.28672 E21.89991	21 Y-082858 X3795832
75	Stone Age artefacts	S34.28825 E21.90359	21 Y-083196 X3796005
075b	Stone Age artefacts	S34.28667 E21.90025	21 Y-082890 X3795827
76	Stone Age artefacts	S34.28835 E21.90342	21 Y-083181 X3796016
076b	Stone Age artefacts	S34.28667 E21.90024	21 Y-082889 X3795828
77	Stone Age artefacts	S34.28839 E21.90341	21 Y-083180 X3796021
077b	Stone Age artefacts	S34.28669 E21.90031	21 Y-082896 X3795829
78	Stone Age artefacts	S34.28842 E21.90330	21 Y-083170 X3796024
078b	MSA img6560-82 snd6582	S34.28669 E21.90034	21 Y-082898 X3795830
79	Stone Age artefacts	S34.28845 E21.90300	21 Y-083142 X3796027
079b	Stone Age artefacts	S34.28672 E21.90042	21 Y-082906 X3795832
80	Stone Age artefacts	S34.28840 E21.90273	21 Y-083117 X3796021
080b	Stone Age artefacts	S34.28676 E21.90048	21 Y-082911 X3795837
81	Stone Age artefacts	S34.28841 E21.90269	21 Y-083113 X3796022
081b	Stone Age artefacts	S34.28678 E21.90055	21 Y-082918 X3795839
82	Stone Age artefacts	S34.28839 E21.90264	21 Y-083108 X3796020
082b	Stone Age artefacts	S34.28680 E21.90061	21 Y-082924 X3795841
83	Stone Age artefacts	S34.28839 E21.90260	21 Y-083105 X3796020
083b	Stone Age artefacts	S34.28672 E21.90084	21 Y-082945 X3795833
84	Stone Age artefacts	S34.28845 E21.90246	21 Y-083092 X3796027
084b	Stone Age artefacts	S34.28676 E21.90094	21 Y-082954 X3795838
85	Stone Age artefacts	S34.28853 E21.90232	21 Y-083079 X3796035
085b	Stone Age artefacts	S34.28676 E21.90107	21 Y-082966 X3795838
86	Stone Age artefacts	S34.28861 E21.90229	21 Y-083076 X3796044
086b	Stone Age artefacts	S34.28676 E21.90116	21 Y-082974 X3795838
87	Stone Age artefacts	S34.28860 E21.90208	21 Y-083057 X3796043
087b	Stone Age artefacts	S34.28677 E21.90147	21 Y-083002 X3795839
88	Stone Age artefacts	S34.28860 E21.90208	21 Y-083057 X3796043
088b	Stone Age artefacts	S34.28682 E21.90166	21 Y-083020 X3795845
89	Stone Age artefacts	S34.28861 E21.90206	21 Y-083055 X3796044
089b	Stone Age artefacts	S34.28671 E21.90149	21 Y-083004 X3795832
90	Stone Age artefacts	S34.28871 E21.90204	21 Y-083053 X3796055
090b	img&snd6583 veg	S34.28667 E21.90148	21 Y-083004 X3795828
91	Stone Age artefacts	S34.28868 E21.90232	21 Y-083079 X3796052
091b	Stone Age artefacts	S34.28665 E21.90147	21 Y-083003 X3795825
92	Stone Age artefacts	S34.28863 E21.90261	21 Y-083106 X3796047
092b	Stone Age artefacts	S34.28660 E21.90142	21 Y-082998 X3795821
93	Stone Age artefacts	S34.28859 E21.90278	21 Y-083122 X3796043
093b	Stone Age artefacts	S34.28654 E21.90136	21 Y-082993 X3795814
94	Stone Age artefacts	S34.28853 E21.90311	21 Y-083151 X3796036
094b	Stone Age artefacts	S34.28647 E21.90149	21 Y-083005 X3795806
95	Stone Age artefacts	S34.28847 E21.90346	21 Y-083184 X3796030
095b	Stone Age artefacts	S34.28628 E21.90183	21 Y-083036 X3795785
96	Stone Age artefacts	S34.28847 E21.90354	21 Y-083191 X3796030
096b	Stone Age artefacts	S34.28628 E21.90185	21 Y-083038 X3795785
97	Stone Age artefacts	S34.28820 E21.90396	21 Y-083230 X3796000
097b	Stone Age artefacts	S34.28630 E21.90190	21 Y-083043 X3795788
98	Stone Age artefacts	S34.28820 E21.90405	21 Y-083238 X3796000
098b	Stone Age artefacts	S34.28627 E21.90194	21 Y-083046 X3795784
99	Stone Age artefacts	S34.28805 E21.90426	21 Y-083258 X3795984
099b	Stone Age artefacts	S34.28626 E21.90197	21 Y-083049 X3795783
100	Stone Age artefacts	S34.28789 E21.90455	21 Y-083285 X3795966
100b	Stone Age artefacts	S34.28624 E21.90223	21 Y-083073 X3795781
101	Stone Age artefacts	S34.28768 E21.90544	21 Y-083367 X3795944

101b	Stone Age artefacts	S34.28621 E21.90226	21 Y-083076 X3795778
102	Stone Age artefacts	S34.28743 E21.90644	21 Y-083460 X3795917
102b	MSA img6584-92 snd6592	S34.28619 E21.90226	21 Y-083076 X3795776
103	Stone Age artefacts	S34.28721 E21.90712	21 Y-083522 X3795893
103b	Stone Age artefacts	S34.28605 E21.90224	21 Y-083074 X3795760
104	Stone Age artefacts	S34.28710 E21.90733	21 Y-083542 X3795881
104b	Stone Age artefacts	S34.28595 E21.90228	21 Y-083078 X3795749
105	Stone Age artefacts	S34.28702 E21.90748	21 Y-083555 X3795872
105b	Stone Age artefacts	S34.28585 E21.90231	21 Y-083081 X3795738
106b	Stone Age artefacts	S34.28585 E21.90223	21 Y-083073 X3795738
107	MSA/LSA img6288-6303 snd6303	S34.28634 E21.90853	21 Y-083653 X3795798
107b	Stone Age artefacts	S34.28570 E21.90205	21 Y-083057 X3795721
108	LSA img6307-8 snd6308	S34.28596 E21.90798	21 Y-083603 X3795755
108b	Stone Age artefacts	S34.28547 E21.90164	21 Y-083019 X3795695
109	MSA/LSA img6309-12 snd6312	S34.28577 E21.90783	21 Y-083589 X3795733
109b	Stone Age artefacts	S34.28568 E21.90037	21 Y-082902 X3795717
110	Stone Age artefacts	S34.28576 E21.90789	21 Y-083595 X3795733
110b	Stone Age artefacts	S34.28569 E21.90032	21 Y-082897 X3795718
111	Stone Age artefacts	S34.28576 E21.90769	21 Y-083576 X3795733
111b	Stone Age artefacts	S34.28570 E21.90028	21 Y-082894 X3795720
112	Stone Age artefacts	S34.28571 E21.90762	21 Y-083569 X3795726
112b	Stone Age artefacts	S34.28573 E21.90019	21 Y-082886 X3795722
113	Stone Age artefacts	S34.28562 E21.90767	21 Y-083575 X3795717
113b	Stone Age artefacts	S34.28580 E21.89992	21 Y-082860 X3795730
114	img6313-6 snd6316	S34.28560 E21.90764	21 Y-083572 X3795714
114b	Stone Age artefacts	S34.28613 E21.89886	21 Y-082763 X3795766
115	Stone Age artefacts	S34.28555 E21.90762	21 Y-083570 X3795709
115b	Stone Age artefacts	S34.28610 E21.89917	21 Y-082792 X3795763
116	Stone Age artefacts	S34.28549 E21.90760	21 Y-083568 X3795702
116b	Stone Age artefacts	S34.28609 E21.89921	21 Y-082795 X3795762
117	Stone Age artefacts	S34.28558 E21.90756	21 Y-083564 X3795713
117b	Stone Age artefacts	S34.28611 E21.89923	21 Y-082797 X3795764
118	LSA/MSA img6317-23 snd3623	S34.28562 E21.90751	21 Y-083559 X3795716
118b	Stone Age artefacts	S34.28600 E21.89950	21 Y-082822 X3795752
119	Stone Age artefacts	S34.28556 E21.90736	21 Y-083546 X3795710
119b	Stone Age artefacts	S34.28600 E21.89965	21 Y-082835 X3795753
120	Historic img6324-5 snd6325	S34.28566 E21.90712	21 Y-083524 X3795720
120b	Stone Age artefacts	S34.28599 E21.89974	21 Y-082844 X3795751
121	Stone Age artefacts	S34.28571 E21.90696	21 Y-083509 X3795726
121b	Stone Age artefacts	S34.28598 E21.89980	21 Y-082850 X3795750
122	Stone Age artefacts	S34.28575 E21.90683	21 Y-083497 X3795731
122b	Stone Age artefacts	S34.28598 E21.89990	21 Y-082859 X3795751
123	Stone Age artefacts	S34.28585 E21.90653	21 Y-083469 X3795741
123b	Stone Age artefacts	S34.28595 E21.90004	21 Y-082872 X3795747
124	Stone Age artefacts	S34.28583 E21.90644	21 Y-083461 X3795740
124b	Stone Age artefacts	S34.28585 E21.90037	21 Y-082902 X3795737
125	Stone Age artefacts	S34.28587 E21.90638	21 Y-083455 X3795743
125b	Stone Age artefacts	S34.28577 E21.90064	21 Y-082927 X3795728
126	Stone Age artefacts	S34.28588 E21.90624	21 Y-083443 X3795745
126b	Stone Age artefacts	S34.28571 E21.90135	21 Y-082993 X3795722
127	Stone Age artefacts	S34.28593 E21.90609	21 Y-083429 X3795750
127b	Stone Age artefacts	S34.28579 E21.90182	21 Y-083035 X3795731
128	Stone Age artefacts	S34.28593 E21.90582	21 Y-083404 X3795749
128b	Stone Age artefacts	S34.28596 E21.90201	21 Y-083053 X3795749
129	Stone Age artefacts	S34.28590 E21.90569	21 Y-083392 X3795746
129b	Stone Age artefacts	S34.28599 E21.90202	21 Y-083054 X3795754
130	Stone Age artefacts	S34.28594 E21.90557	21 Y-083380 X3795751
130b	Stone Age artefacts	S34.28602 E21.90197	21 Y-083049 X3795757
131	Stone Age artefacts	S34.28599 E21.90546	21 Y-083371 X3795756
131b	Stone Age artefacts	S34.28605 E21.90191	21 Y-083044 X3795760
132	Stone Age artefacts	S34.28597 E21.90543	21 Y-083368 X3795754
132b	Stone Age artefacts	S34.28611 E21.90191	21 Y-083043 X3795766
133	Stone Age artefacts	S34.28593 E21.90540	21 Y-083366 X3795749
133b	Stone Age artefacts	S34.28625 E21.90160	21 Y-083015 X3795782
134	Stone Age artefacts	S34.28590 E21.90536	21 Y-083361 X3795746
134b	Stone Age artefacts	S34.28645 E21.90133	21 Y-082989 X3795803
135	LSA/MSA img6326-7 snd6327	S34.28595 E21.90525	21 Y-083351 X3795752
135b	Stone Age artefacts	S34.28658 E21.90116	21 Y-082974 X3795817
136	Stone Age artefacts	S34.28603 E21.90539	21 Y-083364 X3795760
136b	Stone Age artefacts	S34.28661 E21.90094	21 Y-082954 X3795821
137	Stone Age artefacts	S34.28605 E21.90551	21 Y-083375 X3795763

137b	Stone Age artefacts	S34.28664 E21.90062	21 Y-082924 X3795824
138	Stone Age artefacts	S34.28615 E21.90542	21 Y-083367 X3795773
138b	Stone Age artefacts	S34.28664 E21.90018	21 Y-082884 X3795824
139	Stone Age artefacts	S34.28612 E21.90528	21 Y-083354 X3795770
139b	Stone Age artefacts	S34.28657 E21.89988	21 Y-082857 X3795816
140	Stone Age artefacts	S34.28607 E21.90489	21 Y-083318 X3795765
140b	Stone Age artefacts	S34.28653 E21.90027	21 Y-082893 X3795811
141	Stone Age artefacts	S34.28599 E21.90450	21 Y-083282 X3795755
141b	Stone Age artefacts	S34.28649 E21.90036	21 Y-082901 X3795807
142	Stone Age artefacts	S34.28600 E21.90430	21 Y-083264 X3795756
142b	Stone Age artefacts	S34.28643 E21.90096	21 Y-082956 X3795801
143	Stone Age artefacts	S34.28606 E21.90424	21 Y-083258 X3795762
143b	Stone Age artefacts	S34.28636 E21.90121	21 Y-082979 X3795794
144	MSA & photo locality img6328-6337 snd6337	S34.28606 E21.90417	21 Y-083252 X3795763
144b	Stone Age artefacts	S34.28638 E21.90144	21 Y-083000 X3795796
145	Stone Age artefacts	S34.28610 E21.90409	21 Y-083244 X3795767
145b	Stone Age artefacts	S34.28610 E21.90172	21 Y-083026 X3795765
146	Stone Age artefacts	S34.28618 E21.90404	21 Y-083240 X3795776
146b	Stone Age artefacts	S34.28598 E21.90171	21 Y-083025 X3795752
147	Stone Age artefacts	S34.28622 E21.90400	21 Y-083236 X3795780
147b	Stone Age artefacts	S34.28591 E21.90171	21 Y-083026 X3795744
148	Stone Age artefacts	S34.28629 E21.90398	21 Y-083234 X3795788
148b	Stone Age artefacts	S34.28579 E21.90156	21 Y-083011 X3795730
149	Stone Age artefacts	S34.28630 E21.90388	21 Y-083224 X3795790
149b	Stone Age artefacts	S34.28578 E21.90133	21 Y-082991 X3795729
150	Stone Age artefacts	S34.28634 E21.90383	21 Y-083220 X3795794
150b	Stone Age artefacts	S34.28591 E21.90035	21 Y-082900 X3795743
151	Stone Age artefacts	S34.28652 E21.90369	21 Y-083207 X3795813
151b	Stone Age artefacts	S34.28598 E21.89994	21 Y-082862 X3795751
152	Stone Age artefacts	S34.28658 E21.90358	21 Y-083197 X3795819
152b	Stone Age artefacts	S34.28600 E21.89990	21 Y-082858 X3795753
153	Stone Age artefacts	S34.28668 E21.90356	21 Y-083195 X3795831
153b	Stone Age artefacts	S34.28619 E21.89928	21 Y-082802 X3795773
154	Stone Age artefacts	S34.28668 E21.90347	21 Y-083186 X3795831
154b	Stone Age artefacts	S34.28628 E21.89901	21 Y-082776 X3795782
155	MSA/LSA img6338-41 snd6341	S34.28683 E21.90333	21 Y-083174 X3795847
155b	Stone Age artefacts	S34.28627 E21.89887	21 Y-082764 X3795781
156	Stone Age artefacts	S34.28697 E21.90325	21 Y-083166 X3795863
156b	Stone Age artefacts	S34.28699 E21.89914	21 Y-082788 X3795862
157	Stone Age artefacts	S34.28714 E21.90313	21 Y-083155 X3795882
157b	Stone Age artefacts	S34.28608 E21.90281	21 Y-083127 X3795764
158	Stone Age artefacts	S34.28726 E21.90297	21 Y-083141 X3795894
158b	Stone Age artefacts	S34.28583 E21.90302	21 Y-083146 X3795736
159	Stone Age artefacts	S34.28729 E21.90293	21 Y-083137 X3795899
159b	Stone Age artefacts	S34.28535 E21.90329	21 Y-083171 X3795683
160	Stone Age artefacts	S34.28760 E21.90269	21 Y-083114 X3795932
160b	Stone Age artefacts	S34.28534 E21.90315	21 Y-083158 X3795682
161	Stone Age artefacts	S34.28767 E21.90265	21 Y-083110 X3795940
161b	Stone Age artefacts	S34.28545 E21.90278	21 Y-083124 X3795694
162	Stone Age artefacts	S34.28757 E21.90286	21 Y-083129 X3795929
162b	Stone Age artefacts	S34.28549 E21.90257	21 Y-083105 X3795698
163	MSA/LSA img6342-51 snd6351	S34.28775 E21.90280	21 Y-083124 X3795949
163b	Stone Age artefacts	S34.28544 E21.90243	21 Y-083092 X3795693
164	Stone Age artefacts	S34.28779 E21.90274	21 Y-083118 X3795954
164b	Stone Age artefacts	S34.28538 E21.90233	21 Y-083083 X3795686
165	Stone Age artefacts	S34.28793 E21.90259	21 Y-083104 X3795969
165b	img6593-7 snd6597 pnrma	S34.28475 E21.90672	21 Y-083488 X3795619
166	LSA-MSA img6352-9 snd6359	S34.28795 E21.90258	21 Y-083103 X3795971
166b	Stone Age artefacts	S34.28475 E21.90609	21 Y-083430 X3795618
167	LSA/MSA img6360-3 snd6363	S34.28825 E21.90219	21 Y-083067 X3796004
167b	img6598-6601 snd6601 pnrma	S34.28516 E21.90077	21 Y-082939 X3795660
168	Stone Age artefacts	S34.28833 E21.90212	21 Y-083061 X3796013
168b	Stone Age artefacts	S34.28502 E21.90164	21 Y-083020 X3795645
169	Stone Age artefacts	S34.28836 E21.90210	21 Y-083059 X3796017
169b	Stone Age artefacts	S34.28488 E21.90159	21 Y-083016 X3795630
170	Stone Age artefacts	S34.28840 E21.90204	21 Y-083053 X3796020
170b	Stone Age artefacts	S34.28485 E21.90154	21 Y-083010 X3795627
171	Stone Age artefacts	S34.28840 E21.90204	21 Y-083054 X3796020
171b	Stone Age artefacts	S34.28490 E21.90144	21 Y-083001 X3795632
172	Stone Age artefacts	S34.28849 E21.90197	21 Y-083047 X3796030
172b	Stone Age artefacts	S34.28494 E21.90141	21 Y-082999 X3795636

173	LSA-MSA img6364 snd6365	S34.28855 E21.90197	21 Y-083047 X3796037
173b	Stone Age artefacts	S34.28491 E21.90098	21 Y-082960 X3795632
174	ESA/MSA img6366-70 snd6370	S34.28861 E21.90207	21 Y-083056 X3796044
174b	Stone Age artefacts	S34.28491 E21.90117	21 Y-082977 X3795633
175	Stone Age artefacts	S34.28871 E21.90194	21 Y-083044 X3796054
175b	Stone Age artefacts	S34.28488 E21.90129	21 Y-082987 X3795629
176	Stone Age artefacts	S34.28872 E21.90187	21 Y-083037 X3796056
176b	Stone Age artefacts	S34.28486 E21.90130	21 Y-082989 X3795627
177	Stone Age artefacts	S34.28875 E21.90173	21 Y-083025 X3796060
177b	Stone Age artefacts	S34.28480 E21.90140	21 Y-082998 X3795621
178	Stone Age artefacts	S34.28883 E21.90158	21 Y-083011 X3796068
178b	Stone Age artefacts	S34.28475 E21.90144	21 Y-083002 X3795615
179	Stone Age artefacts	S34.28887 E21.90150	21 Y-083003 X3796073
179b	Stone Age artefacts	S34.28466 E21.90137	21 Y-082995 X3795605
180	Stone Age artefacts	S34.28892 E21.90141	21 Y-082995 X3796078
180b	Stone Age artefacts	S34.28471 E21.90127	21 Y-082986 X3795610
181	Stone Age artefacts	S34.28897 E21.90135	21 Y-082990 X3796084
181b	Stone Age artefacts	S34.28476 E21.90115	21 Y-082975 X3795616
182	Stone Age artefacts	S34.28905 E21.90128	21 Y-082983 X3796092
182b	Stone Age artefacts	S34.28480 E21.90107	21 Y-082968 X3795621
183	Stone Age artefacts	S34.28925 E21.90119	21 Y-082975 X3796114
183b	Stone Age artefacts	S34.28482 E21.90087	21 Y-082949 X3795622
184	Stone Age artefacts	S34.28920 E21.90133	21 Y-082987 X3796109
184b	Stone Age artefacts	S34.28469 E21.90090	21 Y-082952 X3795608
185	Stone Age artefacts	S34.28908 E21.90151	21 Y-083004 X3796095
185b	Stone Age artefacts	S34.28464 E21.90102	21 Y-082963 X3795602
186	Stone Age artefacts	S34.28905 E21.90161	21 Y-083013 X3796092
186b	Stone Age artefacts	S34.28457 E21.90111	21 Y-082971 X3795595
187	Stone Age artefacts	S34.28903 E21.90164	21 Y-083016 X3796090
187b	Stone Age artefacts	S34.28452 E21.90120	21 Y-082980 X3795590
188	Stone Age artefacts	S34.28892 E21.90191	21 Y-083041 X3796078
188b	Stone Age artefacts	S34.28447 E21.90116	21 Y-082976 X3795584
189	Stone Age artefacts	S34.28881 E21.90213	21 Y-083061 X3796066
189b	Stone Age artefacts	S34.28437 E21.90107	21 Y-082968 X3795573
190	Stone Age artefacts	S34.28870 E21.90217	21 Y-083065 X3796053
190b	Stone Age artefacts	S34.28440 E21.90104	21 Y-082965 X3795576
191	Stone Age artefacts	S34.28865 E21.90294	21 Y-083136 X3796049
191b	Stone Age artefacts	S34.28444 E21.90096	21 Y-082958 X3795581
192	Stone Age artefacts	S34.28863 E21.90325	21 Y-083164 X3796047
192b	Stone Age artefacts	S34.28447 E21.90089	21 Y-082952 X3795583
193	Stone Age artefacts	S34.28861 E21.90333	21 Y-083172 X3796045
193b	Stone Age artefacts	S34.28448 E21.90083	21 Y-082946 X3795585
194	Stone Age artefacts	S34.28858 E21.90352	21 Y-083190 X3796042
194b	Stone Age artefacts	S34.28449 E21.90075	21 Y-082938 X3795586
195	Stone Age artefacts	S34.28851 E21.90372	21 Y-083208 X3796035
195b	Stone Age artefacts	S34.28455 E21.90065	21 Y-082929 X3795592
196	Stone Age artefacts	S34.28838 E21.90390	21 Y-083225 X3796019
196b	Stone Age artefacts	S34.28458 E21.90054	21 Y-082919 X3795595
197	Stone Age artefacts	S34.28832 E21.90403	21 Y-083237 X3796014
197b	Stone Age artefacts	S34.28460 E21.90044	21 Y-082910 X3795598
198	Stone Age artefacts	S34.28820 E21.90433	21 Y-083264 X3796000
198b	Stone Age artefacts	S34.28448 E21.90037	21 Y-082903 X3795584
199	Stone Age artefacts	S34.28820 E21.90435	21 Y-083267 X3796000
199b	Stone Age artefacts	S34.28447 E21.90046	21 Y-082912 X3795583
200	Stone Age artefacts	S34.28796 E21.90491	21 Y-083318 X3795974
200b	Stone Age artefacts	S34.28445 E21.90052	21 Y-082917 X3795581
201	Stone Age artefacts	S34.28791 E21.90510	21 Y-083335 X3795969
201b	Stone Age artefacts	S34.28439 E21.90070	21 Y-082933 X3795574
202	Stone Age artefacts	S34.28792 E21.90518	21 Y-083343 X3795970
202b	Stone Age artefacts	S34.28436 E21.90073	21 Y-082936 X3795571
203	Stone Age artefacts	S34.28792 E21.90522	21 Y-083347 X3795970
203b	Stone Age artefacts	S34.28432 E21.90079	21 Y-082942 X3795567
204	Stone Age artefacts	S34.28782 E21.90550	21 Y-083372 X3795959
204b	Stone Age artefacts	S34.28427 E21.90084	21 Y-082947 X3795561
205	Stone Age artefacts	S34.28775 E21.90581	21 Y-083401 X3795951
205b	Stone Age artefacts	S34.28421 E21.90090	21 Y-082952 X3795554
206	Stone Age artefacts	S34.28775 E21.90602	21 Y-083420 X3795952
206b	Stone Age artefacts	S34.28413 E21.90085	21 Y-082948 X3795546
207	Stone Age artefacts	S34.28756 E21.90675	21 Y-083488 X3795932
207b	Stone Age artefacts	S34.28407 E21.90080	21 Y-082943 X3795539
208	Stone Age artefacts	S34.28744 E21.90719	21 Y-083528 X3795918

208b	Stone Age artefacts	S34.28408 E21.90077	21 Y-082940 X3795541
209	Stone Age artefacts	S34.28742 E21.90725	21 Y-083534 X3795916
209b	Stone Age artefacts	S34.28415 E21.90060	21 Y-082925 X3795548
210	Stone Age artefacts	S34.28721 E21.90766	21 Y-083572 X3795893
210b	Stone Age artefacts	S34.28417 E21.90054	21 Y-082919 X3795550
211	Stone Age artefacts	S34.28721 E21.90786	21 Y-083590 X3795893
211b	Stone Age artefacts	S34.28427 E21.90038	21 Y-082904 X3795561
212	MSA img6373-7 snd6377	S34.28757 E21.90727	21 Y-083536 X3795933
212b	Stone Age artefacts	S34.28429 E21.90028	21 Y-082895 X3795563
213	Stone Age artefacts	S34.28769 E21.90726	21 Y-083535 X3795946
213b	Stone Age artefacts	S34.28407 E21.90046	21 Y-082912 X3795539
214	Stone Age artefacts	S34.28785 E21.90713	21 Y-083522 X3795963
214b	Stone Age artefacts	S34.28389 E21.90068	21 Y-082932 X3795519
215	Stone Age artefacts	S34.28801 E21.90699	21 Y-083510 X3795982
215b	Stone Age artefacts	S34.28386 E21.90066	21 Y-082931 X3795516
216	Stone Age artefacts	S34.28813 E21.90689	21 Y-083500 X3795995
216b	Stone Age artefacts	S34.28381 E21.90061	21 Y-082926 X3795510
217	Stone Age artefacts	S34.28862 E21.90651	21 Y-083465 X3796048
217b	Stone Age artefacts	S34.28376 E21.90049	21 Y-082915 X3795504
218	Stone Age artefacts	S34.28886 E21.90607	21 Y-083424 X3796075
218b	Stone Age artefacts	S34.28379 E21.90043	21 Y-082909 X3795507
219	Stone Age artefacts	S34.28901 E21.90598	21 Y-083416 X3796092
219b	Stone Age artefacts	S34.28381 E21.90034	21 Y-082901 X3795510
220	Stone Age artefacts	S34.28909 E21.90596	21 Y-083413 X3796100
220b	Stone Age artefacts	S34.28385 E21.90021	21 Y-082889 X3795514
221	Stone Age artefacts	S34.28917 E21.90591	21 Y-083409 X3796109
221b	Stone Age artefacts	S34.28387 E21.90011	21 Y-082880 X3795517
222	Stone Age artefacts	S34.28939 E21.90580	21 Y-083399 X3796133
222b	Stone Age artefacts	S34.28375 E21.89995	21 Y-082866 X3795503
223	Stone Age artefacts	S34.28981 E21.90542	21 Y-083363 X3796180
223b	Stone Age artefacts	S34.28373 E21.90003	21 Y-082873 X3795501
224	Stone Age artefacts	S34.28978 E21.90465	21 Y-083293 X3796176
224b	Stone Age artefacts	S34.28371 E21.90026	21 Y-082895 X3795499
225	Stone Age artefacts	S34.28971 E21.90380	21 Y-083214 X3796168
225b	Stone Age artefacts	S34.28370 E21.90054	21 Y-082919 X3795498
226	Stone Age artefacts	S34.28969 E21.90259	21 Y-083103 X3796164
226b	Stone Age artefacts	S34.28365 E21.90061	21 Y-082926 X3795492
227	Stone Age artefacts	S34.28944 E21.90176	21 Y-083027 X3796135
227b	Stone Age artefacts	S34.28365 E21.90063	21 Y-082928 X3795493
228	Stone Age artefacts	S34.28934 E21.90144	21 Y-082997 X3796124
228b	Stone Age artefacts	S34.28351 E21.90050	21 Y-082917 X3795476
229	Stone Age artefacts	S34.28930 E21.90138	21 Y-082992 X3796120
229b	Stone Age artefacts	S34.28420 E21.90202	21 Y-083056 X3795555
230	Stone Age artefacts	S34.28895 E21.90098	21 Y-082955 X3796081
230b	Stone Age artefacts	S34.28438 E21.90208	21 Y-083061 X3795575
231	Stone Age artefacts	S34.28899 E21.90080	21 Y-082938 X3796085
231b	Stone Age artefacts	S34.28446 E21.90206	21 Y-083059 X3795583
232	Stone Age artefacts	S34.28896 E21.90075	21 Y-082934 X3796081
232b	Stone Age artefacts	S34.28456 E21.90211	21 Y-083064 X3795595
233	Stone Age artefacts	S34.28891 E21.90076	21 Y-082935 X3796076
233b	Stone Age artefacts	S34.28459 E21.90224	21 Y-083075 X3795598
234	Stone Age artefacts	S34.28891 E21.90067	21 Y-082927 X3796076
234b	Stone Age artefacts	S34.28456 E21.90231	21 Y-083082 X3795595
235	Stone Age artefacts	S34.28883 E21.90061	21 Y-082921 X3796067
235b	Stone Age artefacts	S34.28458 E21.90257	21 Y-083106 X3795598
236	Stone Age artefacts	S34.28877 E21.90072	21 Y-082931 X3796061
236b	Stone Age artefacts	S34.28462 E21.90286	21 Y-083132 X3795601
237	Stone Age artefacts	S34.28877 E21.90083	21 Y-082942 X3796060
237b	Stone Age artefacts	S34.28456 E21.90300	21 Y-083145 X3795596
238	Stone Age artefacts	S34.28879 E21.90096	21 Y-082954 X3796063
238b	Stone Age artefacts	S34.28436 E21.90347	21 Y-083189 X3795574
239	Stone Age artefacts	S34.28878 E21.90122	21 Y-082978 X3796062
239b	Stone Age artefacts	S34.28418 E21.90373	21 Y-083213 X3795554
240	Stone Age artefacts	S34.28876 E21.90134	21 Y-082989 X3796060
240b	Stone Age artefacts	S34.28408 E21.90391	21 Y-083229 X3795543
241	Stone Age artefacts	S34.28873 E21.90146	21 Y-082999 X3796056
241b	Stone Age artefacts	S34.28403 E21.90423	21 Y-083259 X3795537
242	Stone Age artefacts	S34.28870 E21.90154	21 Y-083007 X3796054
242b	Stone Age artefacts	S34.28407 E21.90458	21 Y-083292 X3795542
243	Stone Age artefacts	S34.28862 E21.90163	21 Y-083015 X3796044
243b	Stone Age artefacts	S34.28409 E21.90473	21 Y-083305 X3795544

244	Stone Age artefacts	S34.28854 E21.90175	21 Y-083026 X3796036
244b	Stone Age artefacts	S34.28405 E21.90491	21 Y-083322 X3795540
245	Stone Age artefacts	S34.28846 E21.90186	21 Y-083037 X3796027
245b	Stone Age artefacts	S34.28388 E21.90410	21 Y-083248 X3795520
246	Stone Age artefacts	S34.28833 E21.90197	21 Y-083047 X3796013
246b	Stone Age artefacts	S34.28391 E21.90391	21 Y-083230 X3795524
247	Stone Age artefacts	S34.28825 E21.90199	21 Y-083049 X3796004
247b	Stone Age artefacts	S34.28399 E21.90364	21 Y-083205 X3795533
248	Stone Age artefacts	S34.28822 E21.90202	21 Y-083052 X3796000
248b	Stone Age artefacts	S34.28405 E21.90355	21 Y-083196 X3795539
249	Stone Age artefacts	S34.28808 E21.90215	21 Y-083064 X3795985
249b	Stone Age artefacts	S34.28413 E21.90340	21 Y-083183 X3795548
250	Stone Age artefacts	S34.28799 E21.90233	21 Y-083081 X3795975
250b	Stone Age artefacts	S34.28423 E21.90328	21 Y-083171 X3795559
251	Stone Age artefacts	S34.28789 E21.90235	21 Y-083083 X3795964
251b	Stone Age artefacts	S34.28426 E21.90325	21 Y-083169 X3795562
252	Stone Age artefacts	S34.28786 E21.90235	21 Y-083082 X3795960
252b	Stone Age artefacts	S34.28440 E21.90271	21 Y-083119 X3795577
253	Stone Age artefacts	S34.28779 E21.90238	21 Y-083085 X3795953
253b	Stone Age artefacts	S34.28435 E21.90254	21 Y-083103 X3795571
254	Stone Age artefacts	S34.28758 E21.90239	21 Y-083087 X3795930
254b	Stone Age artefacts	S34.28418 E21.90222	21 Y-083074 X3795552
255	Stone Age artefacts	S34.28755 E21.90240	21 Y-083088 X3795926
255b	Stone Age artefacts	S34.28402 E21.90224	21 Y-083076 X3795535
256	Stone Age artefacts	S34.28733 E21.90268	21 Y-083113 X3795902
256b	Stone Age artefacts	S34.28395 E21.90231	21 Y-083083 X3795528
257	Stone Age artefacts	S34.28729 E21.90276	21 Y-083121 X3795898
257b	Stone Age artefacts	S34.28427 E21.90253	21 Y-083103 X3795563
258	Stone Age artefacts	S34.28722 E21.90288	21 Y-083132 X3795890
258b	Stone Age artefacts	S34.28431 E21.90258	21 Y-083107 X3795567
259	Stone Age artefacts	S34.28715 E21.90297	21 Y-083141 X3795883
259b	Stone Age artefacts	S34.28433 E21.90281	21 Y-083128 X3795569
260	Stone Age artefacts	S34.28709 E21.90304	21 Y-083147 X3795876
260b	Stone Age artefacts	S34.28432 E21.90285	21 Y-083132 X3795569
261	Stone Age artefacts	S34.28701 E21.90308	21 Y-083150 X3795867
261b	Stone Age artefacts	S34.28404 E21.90341	21 Y-083184 X3795537
262	Stone Age artefacts	S34.28695 E21.90314	21 Y-083156 X3795861
262b	Stone Age artefacts	S34.28399 E21.90346	21 Y-083188 X3795532
263	img6378-80 snd6380	S34.28678 E21.90328	21 Y-083169 X3795842
263b	Stone Age artefacts	S34.28374 E21.90438	21 Y-083273 X3795506
264	Stone Age artefacts	S34.28674 E21.90322	21 Y-083163 X3795837
264b	img6602-6 snd6606 pnrma	S34.28379 E21.90455	21 Y-083289 X3795512
265	Stone Age artefacts	S34.28676 E21.90321	21 Y-083163 X3795840
265b	Stone Age artefacts	S34.28369 E21.90445	21 Y-083280 X3795500
266	Stone Age artefacts	S34.28672 E21.90317	21 Y-083159 X3795835
266b	Stone Age artefacts	S34.28385 E21.90334	21 Y-083178 X3795517
267	Stone Age artefacts	S34.28665 E21.90318	21 Y-083160 X3795827
267b	Stone Age artefacts	S34.28407 E21.90255	21 Y-083105 X3795540
268	Stone Age artefacts	S34.28657 E21.90317	21 Y-083159 X3795818
268b	Stone Age artefacts	S34.28379 E21.90237	21 Y-083089 X3795510
269	Stone Age artefacts	S34.28653 E21.90317	21 Y-083159 X3795814
269b	Stone Age artefacts	S34.28374 E21.90237	21 Y-083089 X3795504
270	Stone Age artefacts	S34.28651 E21.90322	21 Y-083164 X3795812
270b	Stone Age artefacts	S34.28390 E21.90283	21 Y-083131 X3795522
271	Stone Age artefacts	S34.28653 E21.90329	21 Y-083170 X3795814
271b	Stone Age artefacts	S34.28392 E21.90278	21 Y-083126 X3795524
272	MSA img6381-7 snd6387	S34.28655 E21.90331	21 Y-083172 X3795816
272b	Stone Age artefacts	S34.28380 E21.90270	21 Y-083119 X3795511
273	MSA img6381-7 snd6387	S34.28655 E21.90337	21 Y-083177 X3795816
273b	Stone Age artefacts	S34.28386 E21.90225	21 Y-083077 X3795517
274	MSA img6381-7 snd6387	S34.28657 E21.90338	21 Y-083179 X3795818
274b	Stone Age artefacts	S34.28395 E21.90203	21 Y-083057 X3795527
275	MSA img6381-7 snd6387	S34.28657 E21.90342	21 Y-083182 X3795818
275b	Stone Age artefacts	S34.28408 E21.90200	21 Y-083054 X3795542
276	Stone Age artefacts	S34.28645 E21.90321	21 Y-083163 X3795805
276b	Stone Age artefacts	S34.28355 E21.90134	21 Y-082994 X3795482
277	Stone Age artefacts	S34.28642 E21.90323	21 Y-083165 X3795802
277b	Stone Age artefacts	S34.28334 E21.90112	21 Y-082974 X3795459
278	Stone Age artefacts	S34.28640 E21.90329	21 Y-083170 X3795800
278b	Stone Age artefacts	S34.28356 E21.90026	21 Y-082894 X3795482
279	Stone Age artefacts	S34.28641 E21.90335	21 Y-083176 X3795801

279b	Stone Age artefacts	S34.28368 E21.90018	21 Y-082886 X3795495
280	Stone Age artefacts	S34.28641 E21.90343	21 Y-083183 X3795801
280b	Stone Age artefacts	S34.28385 E21.90012	21 Y-082881 X3795514
281	Stone Age artefacts	S34.28633 E21.90346	21 Y-083186 X3795792
281b	Stone Age artefacts	S34.28390 E21.90005	21 Y-082875 X3795520
282	Stone Age artefacts	S34.28630 E21.90351	21 Y-083191 X3795789
282b	ESA img6607-10 snd6610	S34.28425 E21.89980	21 Y-082851 X3795559
283	Stone Age artefacts	S34.28628 E21.90355	21 Y-083195 X3795787
283b	Stone Age artefacts	S34.28453 E21.89851	21 Y-082732 X3795588
284	Stone Age artefacts	S34.28621 E21.90363	21 Y-083202 X3795779
284b	Stone Age artefacts	S34.28470 E21.89886	21 Y-082765 X3795607
285	MSA-ESA img6388-91 snd6391	S34.28615 E21.90372	21 Y-083210 X3795773
285b	Stone Age artefacts	S34.28460 E21.89908	21 Y-082784 X3795596
286	Stone Age artefacts	S34.28611 E21.90384	21 Y-083222 X3795768
286b	Stone Age artefacts	S34.28465 E21.89921	21 Y-082797 X3795602
287	Stone Age artefacts	S34.28608 E21.90386	21 Y-083223 X3795764
287b	Stone Age artefacts	S34.28467 E21.89933	21 Y-082808 X3795605
288	Stone Age artefacts	S34.28604 E21.90387	21 Y-083224 X3795760
288b	Stone Age artefacts	S34.28442 E21.89990	21 Y-082861 X3795578
289	calcrete w shell img6392-7 snd6392	S34.28597 E21.90411	21 Y-083246 X3795753
289b	Stone Age artefacts	S34.28442 E21.89991	21 Y-082861 X3795577
290	Stone Age artefacts	S34.28587 E21.90432	21 Y-083266 X3795742
290b	Stone Age artefacts	S34.28434 E21.90010	21 Y-082879 X3795568
291	Stone Age artefacts	S34.28580 E21.90458	21 Y-083290 X3795734
291b	Stone Age artefacts	S34.28437 E21.90017	21 Y-082885 X3795572
292	Stone Age artefacts	S34.28584 E21.90467	21 Y-083298 X3795739
292b	Stone Age artefacts	S34.28447 E21.90012	21 Y-082881 X3795583
293	Stone Age artefacts	S34.28598 E21.90489	21 Y-083318 X3795754
293b	Stone Age artefacts	S34.28463 E21.89996	21 Y-082865 X3795600
294	Stone Age artefacts	S34.28584 E21.90476	21 Y-083306 X3795739
294b	Stone Age artefacts	S34.28475 E21.89976	21 Y-082847 X3795614
295	Stone Age artefacts	S34.28580 E21.90484	21 Y-083314 X3795734
295b	Stone Age artefacts	S34.28477 E21.89976	21 Y-082847 X3795616
296	Stone Age artefacts	S34.28580 E21.90490	21 Y-083319 X3795735
296b	Stone Age artefacts	S34.28498 E21.89814	21 Y-082698 X3795638
297	Stone Age artefacts	S34.28584 E21.90496	21 Y-083325 X3795738
297b	Stone Age artefacts	S34.28517 E21.89784	21 Y-082669 X3795659
298	Stone Age artefacts	S34.28577 E21.90493	21 Y-083322 X3795731
298b	Stone Age artefacts	S34.28506 E21.89898	21 Y-082775 X3795648
299	Stone Age artefacts	S34.28576 E21.90495	21 Y-083324 X3795730
299b	Stone Age artefacts	S34.28500 E21.89967	21 Y-082838 X3795642
300	Stone Age artefacts	S34.28574 E21.90499	21 Y-083327 X3795727
300b	Stone Age artefacts	S34.28499 E21.89973	21 Y-082844 X3795641
301	Stone Age artefacts	S34.28568 E21.90505	21 Y-083333 X3795721
301b	Stone Age artefacts	S34.28496 E21.89986	21 Y-082856 X3795638
302	Stone Age artefacts	S34.28564 E21.90508	21 Y-083336 X3795717
302b	Stone Age artefacts	S34.28492 E21.89991	21 Y-082861 X3795633
303	Stone Age artefacts	S34.28558 E21.90501	21 Y-083330 X3795710
303b	Stone Age artefacts	S34.28486 E21.89997	21 Y-082867 X3795627
304	Stone Age artefacts	S34.28558 E21.90515	21 Y-083343 X3795710
304b	Stone Age artefacts	S34.28479 E21.90006	21 Y-082874 X3795618
305	Stone Age artefacts	S34.28558 E21.90522	21 Y-083349 X3795710
305b	Stone Age artefacts	S34.28461 E21.90023	21 Y-082890 X3795598
306	Stone Age artefacts	S34.28557 E21.90529	21 Y-083356 X3795710
306b	Stone Age artefacts	S34.28477 E21.90027	21 Y-082894 X3795617
307	Stone Age artefacts	S34.28557 E21.90540	21 Y-083366 X3795709
307b	Stone Age artefacts	S34.28484 E21.90023	21 Y-082891 X3795624
308	Stone Age artefacts	S34.28557 E21.90546	21 Y-083371 X3795709
308b	Stone Age artefacts	S34.28500 E21.90013	21 Y-082881 X3795642
309	Stone Age artefacts	S34.28558 E21.90562	21 Y-083386 X3795711
309b	Stone Age artefacts	S34.28506 E21.90000	21 Y-082868 X3795648
310	Stone Age artefacts	S34.28553 E21.90571	21 Y-083394 X3795705
310b	Stone Age artefacts	S34.28508 E21.89987	21 Y-082857 X3795651
311	Stone Age artefacts	S34.28553 E21.90573	21 Y-083396 X3795705
311b	Stone Age artefacts	S34.28511 E21.89977	21 Y-082848 X3795653
312	Stone Age artefacts	S34.28548 E21.90563	21 Y-083387 X3795700
312b	Stone Age artefacts	S34.28515 E21.89957	21 Y-082829 X3795658
313	Stone Age artefacts	S34.28545 E21.90566	21 Y-083390 X3795696
313b	Stone Age artefacts	S34.28517 E21.89951	21 Y-082823 X3795660
314	Stone Age artefacts	S34.28540 E21.90564	21 Y-083388 X3795691
314b	Stone Age artefacts	S34.28518 E21.89939	21 Y-082813 X3795661

315	Stone Age artefacts	S34.28537 E21.90567	21 Y-083391 X3795687
315b	Stone Age artefacts	S34.28521 E21.89931	21 Y-082805 X3795665
316	Stone Age artefacts	S34.28533 E21.90571	21 Y-083394 X3795683
316b	Stone Age artefacts	S34.28522 E21.89923	21 Y-082798 X3795666
317	Stone Age artefacts	S34.28529 E21.90576	21 Y-083399 X3795678
317b	Stone Age artefacts	S34.28529 E21.89841	21 Y-082722 X3795673
318	Stone Age artefacts	S34.28530 E21.90583	21 Y-083405 X3795680
318b	Stone Age artefacts	S34.28534 E21.89816	21 Y-082699 X3795678
319	Stone Age artefacts	S34.28531 E21.90592	21 Y-083414 X3795680
319b	Stone Age artefacts	S34.28544 E21.89837	21 Y-082718 X3795689
320	Stone Age artefacts	S34.28531 E21.90599	21 Y-083420 X3795680
320b	Stone Age artefacts	S34.28542 E21.89857	21 Y-082737 X3795687
321	Stone Age artefacts	S34.28528 E21.90599	21 Y-083420 X3795678
321b	Stone Age artefacts	S34.28533 E21.89915	21 Y-082790 X3795678
322	Stone Age artefacts	S34.28527 E21.90574	21 Y-083397 X3795676
322b	Stone Age artefacts	S34.28533 E21.89919	21 Y-082794 X3795677
323	Stone Age artefacts	S34.28527 E21.90567	21 Y-083391 X3795677
323b	Stone Age artefacts	S34.28532 E21.89929	21 Y-082803 X3795677
324	Stone Age artefacts	S34.28523 E21.90563	21 Y-083387 X3795672
324b	Stone Age artefacts	S34.28527 E21.89967	21 Y-082838 X3795672
325	Stone Age artefacts	S34.28523 E21.90559	21 Y-083383 X3795672
325b	Stone Age artefacts	S34.28527 E21.89974	21 Y-082845 X3795671
326	Stone Age artefacts	S34.28520 E21.90552	21 Y-083377 X3795668
326b	Stone Age artefacts	S34.28520 E21.89995	21 Y-082864 X3795664
327	Stone Age artefacts	S34.28518 E21.90548	21 Y-083373 X3795666
327b	Stone Age artefacts	S34.28515 E21.90006	21 Y-082874 X3795658
328	Stone Age artefacts	S34.28520 E21.90544	21 Y-083369 X3795668
328b	Stone Age artefacts	S34.28503 E21.90023	21 Y-082890 X3795645
329	Stone Age artefacts	S34.28533 E21.90524	21 Y-083351 X3795683
329b	Stone Age artefacts	S34.28492 E21.90035	21 Y-082902 X3795633
330	Stone Age artefacts	S34.28537 E21.90533	21 Y-083359 X3795687
330b	Stone Age artefacts	S34.28484 E21.90043	21 Y-082908 X3795625
331	Stone Age artefacts	S34.28543 E21.90534	21 Y-083360 X3795694
331b	Stone Age artefacts	S34.28489 E21.90056	21 Y-082921 X3795630
332	Stone Age artefacts	S34.28544 E21.90526	21 Y-083353 X3795695
332b	Stone Age artefacts	S34.28501 E21.90052	21 Y-082917 X3795643
333	Stone Age artefacts	S34.28542 E21.90522	21 Y-083349 X3795693
333b	Stone Age artefacts	S34.28511 E21.90040	21 Y-082905 X3795654
334	Stone Age artefacts	S34.28541 E21.90517	21 Y-083344 X3795691
334b	Stone Age artefacts	S34.28519 E21.90024	21 Y-082891 X3795663
335	Stone Age artefacts	S34.28541 E21.90507	21 Y-083335 X3795691
335b	Stone Age artefacts	S34.28524 E21.90022	21 Y-082889 X3795668
336	Stone Age artefacts	S34.28537 E21.90497	21 Y-083326 X3795687
336b	Stone Age artefacts	S34.28508 E21.90055	21 Y-082920 X3795651
337	Stone Age artefacts	S34.28534 E21.90494	21 Y-083323 X3795683
337b	Stone Age artefacts	S34.28503 E21.90062	21 Y-082926 X3795645
338	Stone Age artefacts	S34.28531 E21.90492	21 Y-083322 X3795680
338b	Stone Age artefacts	S34.28514 E21.90067	21 Y-082930 X3795657
339	Stone Age artefacts	S34.28534 E21.90488	21 Y-083318 X3795683
339b	Stone Age artefacts	S34.28518 E21.90061	21 Y-082925 X3795663
340	Stone Age artefacts	S34.28535 E21.90483	21 Y-083314 X3795685
340b	Stone Age artefacts	S34.28617 E21.90259	21 Y-083106 X3795774
341	Stone Age artefacts	S34.28535 E21.90477	21 Y-083308 X3795684
341b	Stone Age artefacts	S34.28814 E21.90428	21 Y-083260 X3795994
342	Stone Age artefacts	S34.28536 E21.90468	21 Y-083299 X3795685
342b	Stone Age artefacts	S34.28860 E21.90478	21 Y-083305 X3796045
343	Stone Age artefacts	S34.28536 E21.90462	21 Y-083294 X3795686
343b	Stone Age artefacts	S34.28875 E21.90529	21 Y-083352 X3796063
344	Stone Age artefacts	S34.28539 E21.90457	21 Y-083289 X3795689
344b	Stone Age artefacts	S34.28888 E21.90555	21 Y-083376 X3796077
345	Stone Age artefacts	S34.28538 E21.90449	21 Y-083282 X3795688
345b	Stone Age artefacts	S34.28906 E21.90582	21 Y-083401 X3796097
346	Stone Age artefacts	S34.28529 E21.90444	21 Y-083277 X3795678
346b	Stone Age artefacts	S34.28918 E21.90588	21 Y-083406 X3796111
347	Stone Age artefacts	S34.28520 E21.90321	21 Y-083164 X3795666
347b	Stone Age artefacts	S34.28929 E21.90597	21 Y-083414 X3796123
348	Stone Age artefacts	S34.28515 E21.90317	21 Y-083161 X3795660
348b	Stone Age artefacts	S34.28933 E21.90603	21 Y-083420 X3796127
349	img6398-6402 snd6402 pnma	S34.28514 E21.90308	21 Y-083152 X3795660
349b	Stone Age artefacts	S34.28938 E21.90616	21 Y-083431 X3796132
350	Stone Age artefacts	S34.28517 E21.90251	21 Y-083100 X3795663

350b	Stone Age artefacts	S34.28940 E21.90636	21 Y-083451 X3796135
351	Stone Age artefacts	S34.28521 E21.90245	21 Y-083094 X3795667
351b	Stone Age artefacts	S34.28939 E21.90661	21 Y-083473 X3796134
352	Stone Age artefacts	S34.28512 E21.90228	21 Y-083079 X3795657
352b	Stone Age artefacts	S34.28947 E21.90666	21 Y-083478 X3796143
353	Stone Age artefacts	S34.28520 E21.90206	21 Y-083058 X3795666
353b	Stone Age artefacts	S34.28960 E21.90672	21 Y-083483 X3796158
354	Stone Age artefacts	S34.28517 E21.90199	21 Y-083052 X3795663
354b	Stone Age artefacts	S34.28972 E21.90680	21 Y-083490 X3796171
355	Stone Age artefacts	S34.28521 E21.90141	21 Y-082998 X3795666
355b	Stone Age artefacts	S34.28978 E21.90700	21 Y-083509 X3796177
356	Stone Age artefacts	S34.28525 E21.90110	21 Y-082970 X3795670
356b	Stone Age artefacts	S34.28966 E21.90801	21 Y-083602 X3796165
357	Stone Age artefacts	S34.28528 E21.90077	21 Y-082940 X3795673
357b	Stone Age artefacts	S34.28960 E21.90741	21 Y-083546 X3796158
358	Stone Age artefacts	S34.28533 E21.90043	21 Y-082908 X3795678
358b	Stone Age artefacts	S34.28959 E21.90723	21 Y-083530 X3796157
359	Stone Age artefacts	S34.28534 E21.90019	21 Y-082886 X3795680
359b	Stone Age artefacts	S34.28959 E21.90707	21 Y-083516 X3796156
360	Stone Age artefacts	S34.28536 E21.90015	21 Y-082882 X3795681
360b	Stone Age artefacts	S34.28957 E21.90689	21 Y-083499 X3796154
361	Stone Age artefacts	S34.28537 E21.89999	21 Y-082868 X3795683
361b	Stone Age artefacts	S34.28956 E21.90642	21 Y-083456 X3796152
362	Stone Age artefacts	S34.28537 E21.89993	21 Y-082862 X3795683
362b	Stone Age artefacts	S34.28955 E21.90632	21 Y-083446 X3796152
363	Stone Age artefacts	S34.28538 E21.89983	21 Y-082853 X3795684
363b	Stone Age artefacts	S34.28953 E21.90600	21 Y-083417 X3796149
364	Stone Age artefacts	S34.28538 E21.89974	21 Y-082844 X3795684
364b	Stone Age artefacts	S34.28952 E21.90584	21 Y-083402 X3796148
365	Stone Age artefacts	S34.28542 E21.89945	21 Y-082818 X3795687
365b	Stone Age artefacts	S34.28934 E21.90313	21 Y-083152 X3796126
366	Stone Age artefacts	S34.28542 E21.89936	21 Y-082810 X3795688
366b	Stone Age artefacts	S34.28930 E21.90287	21 Y-083129 X3796121
367	Stone Age artefacts	S34.28545 E21.89920	21 Y-082795 X3795691
367b	Stone Age artefacts	S34.28925 E21.90257	21 Y-083102 X3796115
368	Stone Age artefacts	S34.28546 E21.89907	21 Y-082783 X3795692
368b	Stone Age artefacts	S34.28921 E21.90192	21 Y-083041 X3796110
369	img6403-7 snd6407 pnrma	S34.28546 E21.89897	21 Y-082773 X3795692
369b	Stone Age artefacts	S34.28918 E21.90182	21 Y-083032 X3796107
370	Stone Age artefacts	S34.28549 E21.89888	21 Y-082766 X3795695
370b	Stone Age artefacts	S34.28914 E21.90167	21 Y-083019 X3796102
371	Stone Age artefacts	S34.28575 E21.89916	21 Y-082791 X3795724
371b	Stone Age artefacts	S34.28903 E21.90191	21 Y-083041 X3796090
372	Stone Age artefacts	S34.28572 E21.89921	21 Y-082795 X3795721
372b	Stone Age artefacts	S34.28912 E21.90293	21 Y-083134 X3796101
373	Stone Age artefacts	S34.28570 E21.89935	21 Y-082808 X3795718
373b	Stone Age artefacts	S34.28926 E21.90460	21 Y-083288 X3796118
374	Stone Age artefacts	S34.28567 E21.89952	21 Y-082824 X3795715
374b	Stone Age artefacts	S34.28931 E21.90543	21 Y-083365 X3796124
375	Stone Age artefacts	S34.28565 E21.89963	21 Y-082834 X3795713
375b	Stone Age artefacts	S34.28933 E21.90566	21 Y-083386 X3796126
376	Stone Age artefacts	S34.28560 E21.89989	21 Y-082858 X3795708
376b	Stone Age artefacts	S34.28934 E21.90677	21 Y-083488 X3796128
377	Stone Age artefacts	S34.28549 E21.90064	21 Y-082927 X3795697
377b	Stone Age artefacts	S34.28946 E21.90699	21 Y-083508 X3796143
378	Stone Age artefacts	S34.28544 E21.90092	21 Y-082953 X3795692
378b	Stone Age artefacts	S34.28942 E21.90713	21 Y-083521 X3796138
379	Stone Age artefacts	S34.28539 E21.90125	21 Y-082983 X3795686
379b	Stone Age artefacts	S34.28936 E21.90728	21 Y-083535 X3796131
380	Stone Age artefacts	S34.28543 E21.90131	21 Y-082989 X3795690
380b	Stone Age artefacts	S34.28935 E21.90754	21 Y-083559 X3796130
381	Stone Age artefacts	S34.28546 E21.90154	21 Y-083011 X3795694
381b	Stone Age artefacts	S34.28937 E21.90762	21 Y-083566 X3796132
382	Stone Age artefacts	S34.28539 E21.90169	21 Y-083024 X3795687
382b	graves img6611-19 snd6619	S34.28954 E21.90824	21 Y-083623 X3796152
383	Stone Age artefacts	S34.28540 E21.90187	21 Y-083040 X3795687
383b	img6620-4 snd6624 pnrma	S34.29004 E21.90848	21 Y-083644 X3796207
384	Stone Age artefacts	S34.28544 E21.90195	21 Y-083048 X3795692
384b	Stone Age artefacts	S34.28985 E21.90813	21 Y-083612 X3796187
385	Stone Age artefacts	S34.28539 E21.90196	21 Y-083049 X3795687
385b	Stone Age artefacts	S34.28943 E21.90854	21 Y-083651 X3796140

386	Stone Age artefacts	S34.28537 E21.90199	21 Y-083052 X3795684
386b	Stone Age artefacts	S34.28917 E21.90922	21 Y-083714 X3796112
387	Stone Age artefacts	S34.28544 E21.90212	21 Y-083063 X3795692
387b	Stone Age artefacts	S34.28915 E21.90903	21 Y-083696 X3796110
388	Stone Age artefacts	S34.28554 E21.90222	21 Y-083073 X3795703
388b	Stone Age artefacts	S34.28913 E21.90891	21 Y-083685 X3796107
389	Stone Age artefacts	S34.28576 E21.90232	21 Y-083081 X3795728
389b	Stone Age artefacts	S34.28912 E21.90884	21 Y-083679 X3796106
390	Stone Age artefacts	S34.28599 E21.90243	21 Y-083092 X3795754
390b	Stone Age artefacts	S34.28911 E21.90875	21 Y-083671 X3796105
391	Stone Age artefacts	S34.28608 E21.90246	21 Y-083095 X3795763
391b	Stone Age artefacts	S34.28909 E21.90851	21 Y-083649 X3796102
392	Stone Age artefacts	S34.28613 E21.90248	21 Y-083096 X3795769
392b	Stone Age artefacts	S34.28906 E21.90772	21 Y-083576 X3796098
393	Stone Age artefacts	S34.28622 E21.90248	21 Y-083096 X3795779
393b	Stone Age artefacts	S34.28905 E21.90763	21 Y-083567 X3796097
394	Stone Age artefacts	S34.28633 E21.90245	21 Y-083093 X3795791
394b	Stone Age artefacts	S34.28903 E21.90749	21 Y-083555 X3796095
395	Stone Age artefacts	S34.28640 E21.90243	21 Y-083092 X3795799
395b	Stone Age artefacts	S34.28902 E21.90739	21 Y-083545 X3796093
396	Stone Age artefacts	S34.28649 E21.90232	21 Y-083081 X3795809
396b	Stone Age artefacts	S34.28900 E21.90721	21 Y-083528 X3796091
397	ESA img6408-13 snd6413	S34.28655 E21.90228	21 Y-083078 X3795815
397b	Stone Age artefacts	S34.28895 E21.90685	21 Y-083496 X3796085
398	Stone Age artefacts	S34.28663 E21.90230	21 Y-083079 X3795824
398b	Stone Age artefacts	S34.28895 E21.90629	21 Y-083444 X3796085
399	Stone Age artefacts	S34.28677 E21.90228	21 Y-083077 X3795840
399b	Stone Age artefacts	S34.28894 E21.90605	21 Y-083422 X3796084
400	Stone Age artefacts	S34.28691 E21.90216	21 Y-083066 X3795855
400b	Stone Age artefacts	S34.28881 E21.90590	21 Y-083408 X3796069
401	Stone Age artefacts	S34.28691 E21.90204	21 Y-083054 X3795855
401b	Stone Age artefacts	S34.28856 E21.90522	21 Y-083346 X3796040
402	Stone Age artefacts	S34.28695 E21.90202	21 Y-083053 X3795860
402b	Stone Age artefacts	S34.28899 E21.90229	21 Y-083076 X3796086
403	Stone Age artefacts	S34.28786 E21.90181	21 Y-083033 X3795961
403b	Stone Age artefacts	S34.28885 E21.90220	21 Y-083068 X3796071
404	Stone Age artefacts	S34.28796 E21.90173	21 Y-083026 X3795972
404b	Stone Age artefacts	S34.28880 E21.90317	21 Y-083157 X3796066
405	Stone Age artefacts	S34.28829 E21.90149	21 Y-083003 X3796008
405b	Stone Age artefacts	S34.28855 E21.90484	21 Y-083311 X3796040
406	Stone Age artefacts	S34.28836 E21.90135	21 Y-082990 X3796015
406b	Stone Age artefacts	S34.28852 E21.90497	21 Y-083323 X3796036
407	Stone Age artefacts	S34.28851 E21.90082	21 Y-082941 X3796032
407b	Stone Age artefacts	S34.28847 E21.90506	21 Y-083331 X3796031
408	Stone Age artefacts	S34.28864 E21.90036	21 Y-082898 X3796045
408b	Stone Age artefacts	S34.28889 E21.90696	21 Y-083506 X3796079
409	Stone Age artefacts	S34.28848 E21.90019	21 Y-082883 X3796028
409b	Stone Age artefacts	S34.28887 E21.90713	21 Y-083522 X3796077
410	Stone Age artefacts	S34.28844 E21.90015	21 Y-082880 X3796023
410b	Stone Age artefacts	S34.28885 E21.90719	21 Y-083527 X3796075
411	Stone Age artefacts	S34.28875 E21.90048	21 Y-082909 X3796058
411b	Stone Age artefacts	S34.28885 E21.90737	21 Y-083544 X3796075
412	Stone Age artefacts	S34.28885 E21.90062	21 Y-082922 X3796069
412b	Stone Age artefacts	S34.28884 E21.90767	21 Y-083572 X3796073
413b	Stone Age artefacts	S34.28896 E21.90885	21 Y-083680 X3796088
414b	Stone Age artefacts	S34.28896 E21.90917	21 Y-083709 X3796089
415b	Stone Age artefacts	S34.28897 E21.90933	21 Y-083724 X3796089
416b	Stone Age artefacts	S34.28895 E21.90957	21 Y-083746 X3796088
417b	Stone Age artefacts	S34.28883 E21.90930	21 Y-083721 X3796074
418b	Stone Age artefacts	S34.28857 E21.90917	21 Y-083710 X3796046
419b	Stone Age artefacts	S34.28827 E21.90914	21 Y-083707 X3796012
420b	Stone Age artefacts	S34.28861 E21.90886	21 Y-083681 X3796050
421b	Stone Age artefacts	S34.28875 E21.90852	21 Y-083649 X3796064
422b	Stone Age artefacts	S34.28826 E21.90855	21 Y-083653 X3796010
423b	Stone Age artefacts	S34.28804 E21.90837	21 Y-083636 X3795986
424b	Stone Age artefacts	S34.28814 E21.90810	21 Y-083612 X3795996
425b	Stone Age artefacts	S34.28809 E21.90757	21 Y-083563 X3795991
426b	Stone Age artefacts	S34.28795 E21.90743	21 Y-083550 X3795975
427b	Stone Age artefacts	S34.28772 E21.90757	21 Y-083563 X3795949
428b	Stone Age artefacts	S34.28738 E21.90780	21 Y-083585 X3795912
429b	Stone Age artefacts	S34.28733 E21.90785	21 Y-083589 X3795907

430b	old house img6625 snd6631	S34.28713	E21.90790	21	Y-083594	X3795884
VB1A	alternative 1 boundary point	S34.28483	E21.89758	21	Y-082646	X3795621
VB1B	alternative 1 boundary point	S34.28339	E21.90510	21	Y-083340	X3795467
VB1C	alternative 1 boundary point	S34.28723	E21.90972	21	Y-083762	X3795897
VB1D	alternative 1 boundary point	S34.29024	E21.91017	21	Y-083800	X3796232
VB1E	alternative 1 boundary point	S34.28978	E21.90287	21	Y-083129	X3796175
VB1F	alternative 1 boundary point	S34.28852	E21.90007	21	Y-082872	X3796032
VB1G	alternative 1 boundary point	S34.28685	E21.89886	21	Y-082762	X3795846
VB1H	alternative 1 boundary point	S34.28733	E21.89753	21	Y-082639	X3795898
VB1I	alternative 1 boundary point	S34.28699	E21.89735	21	Y-082623	X3795861
VB1J	alternative 1 boundary point	S34.28657	E21.89814	21	Y-082696	X3795815
VB1K	alternative 1 boundary point	S34.28622	E21.89821	21	Y-082703	X3795776
VB1L	alternative 1 boundary point	S34.28611	E21.89843	21	Y-082724	X3795764
VB2A	alternative 2 boundary point	S34.28483	E21.89758	21	Y-082646	X3795621
VB2B	alternative 2 boundary point	S34.28339	E21.90510	21	Y-083340	X3795467
VB2C	alternative 2 boundary point	S34.28723	E21.90972	21	Y-083762	X3795897
VB2D	alternative 2 boundary point	S34.29024	E21.91017	21	Y-083800	X3796232
VB2E	alternative 2 boundary point	S34.28978	E21.90287	21	Y-083129	X3796175
VB2F	alternative 2 boundary point	S34.28572	E21.90007	21	Y-082874	X3795722
VB3A	alternative 3 boundary point	S34.28928	E21.90123	21	Y-082978	X3796118
VB3B	alternative 3 boundary point	S34.28610	E21.90438	21	Y-083271	X3795767
VB3C	alternative 3 boundary point	S34.28513	E21.90717	21	Y-083529	X3795662
VB3D	alternative 3 boundary point	S34.28724	E21.90972	21	Y-083762	X3795899
VB3E	alternative 3 boundary point	S34.29008	E21.90987	21	Y-083772	X3796213
VB3F	alternative 3 boundary point	S34.28976	E21.90270	21	Y-083113	X3796171
VB4A	alternative 4 boundary point	S34.28504	E21.90296	21	Y-083141	X3795648
VB4B	alternative 4 boundary point	S34.28469	E21.90665	21	Y-083482	X3795613
VB4C	alternative 4 boundary point	S34.28734	E21.90962	21	Y-083752	X3795910
VB4D	alternative 4 boundary point	S34.29003	E21.90990	21	Y-083776	X3796208
VB4E	alternative 4 boundary point	S34.28978	E21.90296	21	Y-083137	X3796175
VB4F	alternative 4 boundary point	S34.28928	E21.90126	21	Y-082980	X3796118